



Madison, Wisconsin

# CITY OF MADISON

## CITY ENGINEERING DIVISION

### DEPARTMENT OF PUBLIC WORKS

# PLAN OF PROPOSED IMPROVEMENT

PUBLIC IMPROVEMENT PROJECT APPROVED

DATE: SEPTEMBER 5, 2023;  
JULY 1, 2025; &  
NOVEMBER 25, 2025

BY THE COMMON COUNCIL OF MADISON, WISCONSIN

PUBLIC IMPROVEMENT DESIGN APPROVED BY:

12/04/2025

City Engineer

Date

#### INDEX OF SHEETS

SHEET NO.	D1-D3	TYPICAL SECTIONS & DETAILS
SHEET NO.	EC1-EC3	EROSION CONTROL PLANS
SHEET NO.	P1-P3	STREET PLAN & PROFILES
SHEET NO.	U1-U8	SEWER PLAN & PROFILES & SCHEDULES
SHEET NO.	W1-W4	WATER PLAN & PROFILES & SCHEDULES
SHEET NO.	E1-E2	ELECTRICAL PLANS
SHEET NO.	PM1-PM5	PAVEMENT MARKING PLANS
SHEET NO.	X1-X3	CROSS SECTIONS

CITY MAINTENANCE PLAN NOT REQUIRED

#### ADDENDUM 1: 12/15/2025

REVISED SHEETS:  
D1, P3, PM2, PM3  
ADDED SHEETS:  
PM4, PM5, X3

#### REVISION 1: 2/13/2026

REVISED SHEETS:  
U-1, U-2

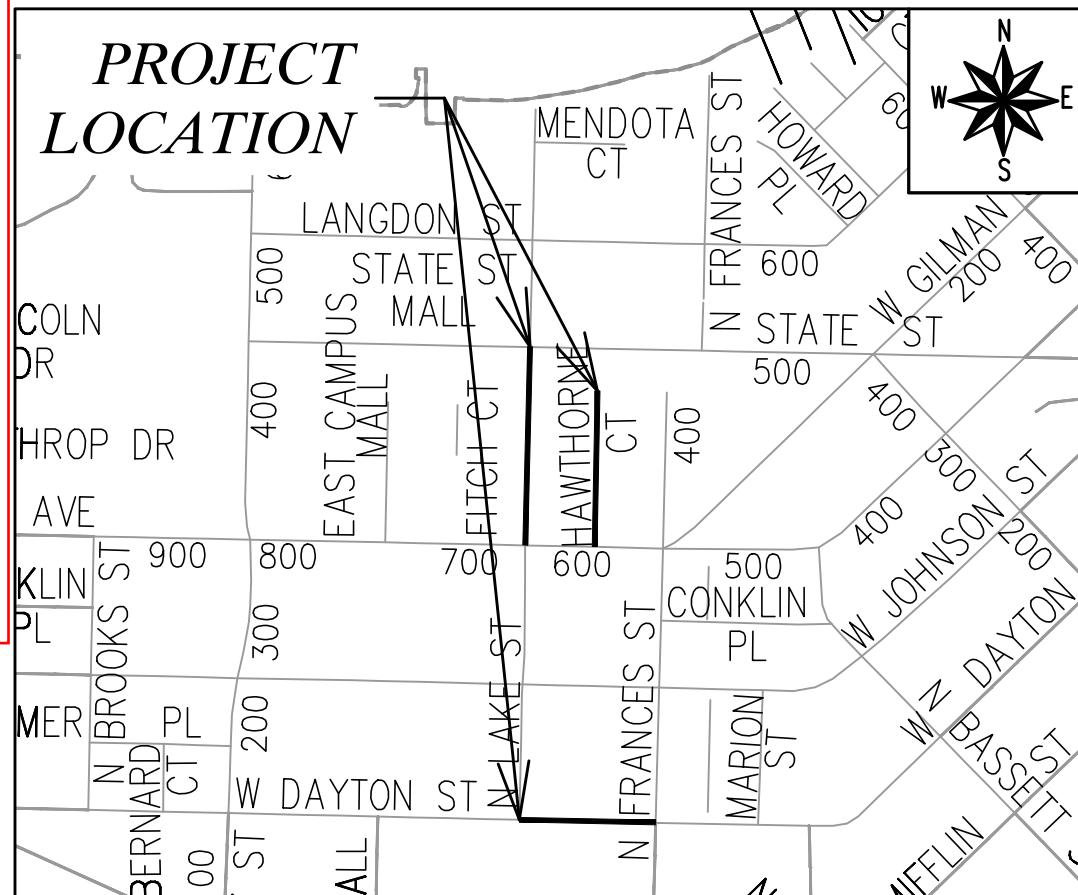
#### REVISION 2: 3/23/2026

REVISED SHEETS:  
U-1, U-3, U-4, U-5, U-6,  
U-7, U-8

#### REVISION 3: 4/20/2026

REVISED SHEETS:  
U-1, U-3, E-1

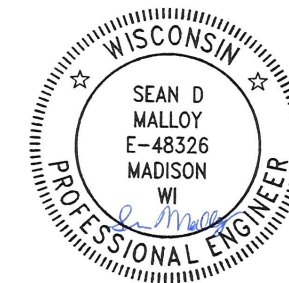
HAWTHORNE COURT RECONSTRUCTION  
ASSESSMENT DISTRICT - 2023  
LAKE STREET SANITARY SEWER  
REPLACEMENT ASSESSMENT DISTRICT - 2025  
WEST DAYTON STREET SANITARY  
REPLACEMENT ASSESSMENT DISTRICT - 2025  
CITY PROJECT NO. 14636 & 15938  
CONTRACT NO. 8733



#### EARTH WORK SUMMARY:

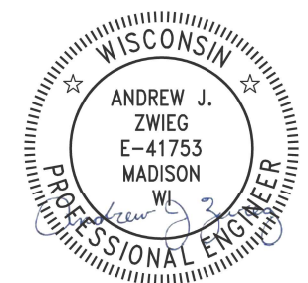
EXCAVATION CUT (MEASURED PLAN QUANTITY) = 800 C.Y.  
ESTIMATED UNDISTRIBUTED UNDERCUT = 300 C.Y.  
TOTAL UNCLASSIFIED EXCAVATION CUT = 1,100 C.Y.

PAVEMENT MARKINGS DESIGNED BY:



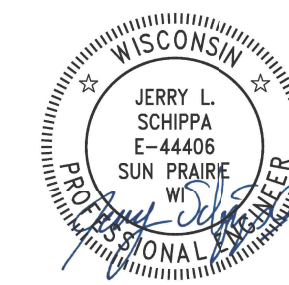
12/04/2025

STREET DESIGNED BY:



12/04/2025

ELECTRICAL DESIGNED BY:



12/04/2025

SANITARY SEWER DESIGNED BY:



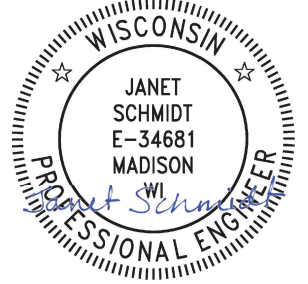
12/04/2025

WATER DESIGNED BY:



12/05/2025

STORM SEWER DESIGNED BY:



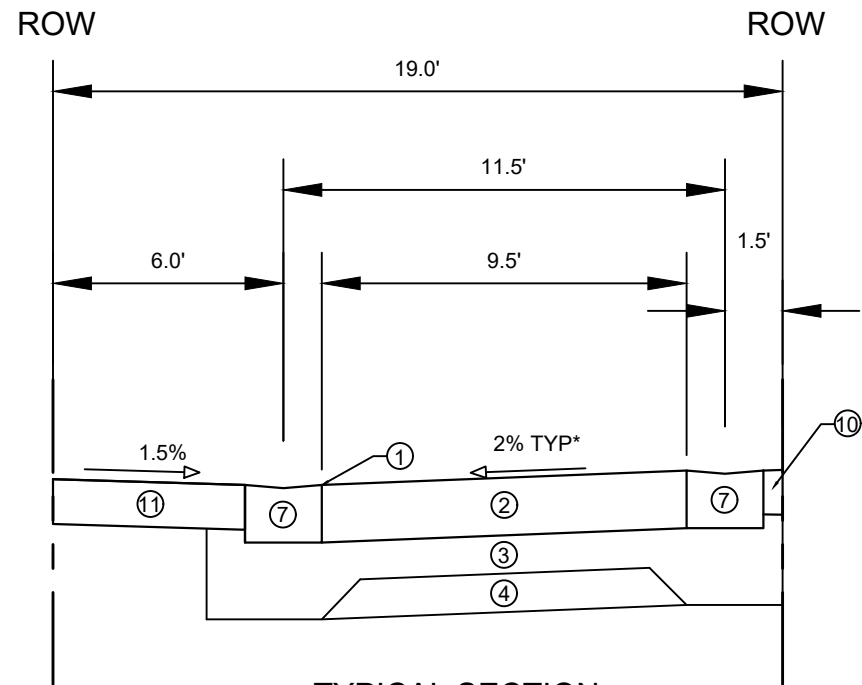
12/04/2025

PLOT SCALE: 1 IN. = 1 FT. XREF

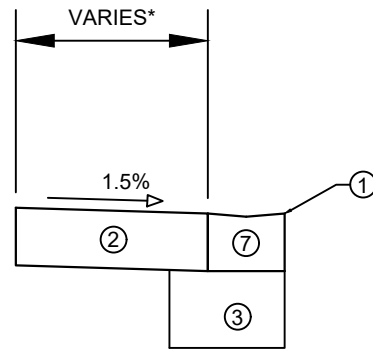
PLOT NAME: ---

REV. DATE: 12/4/2025 11:24 AM

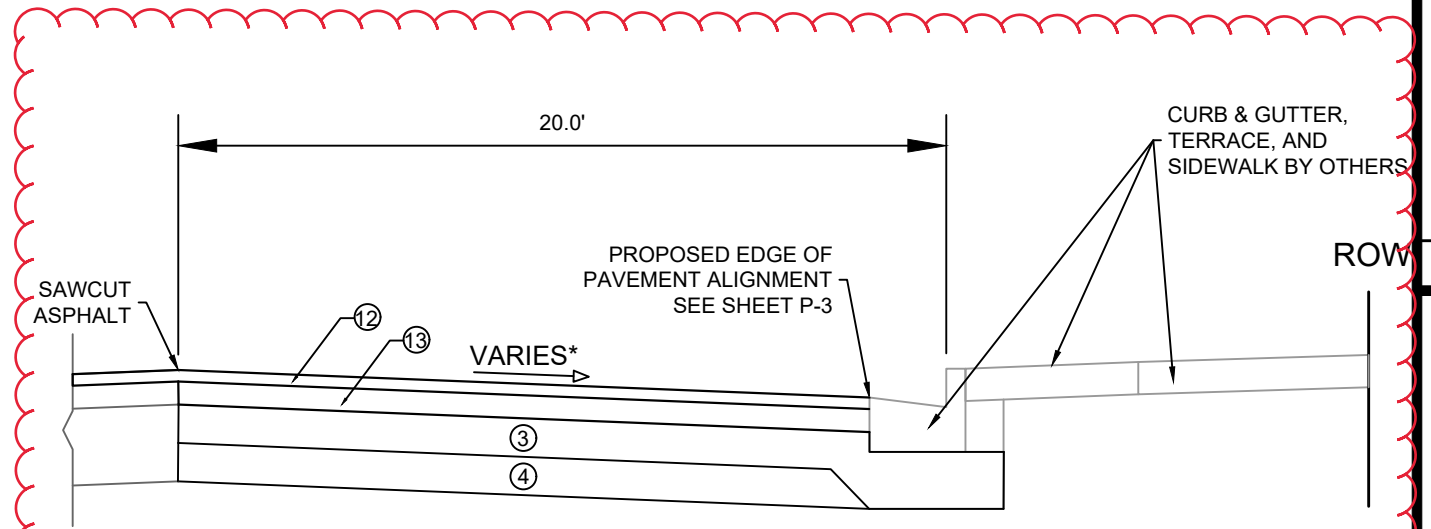
ORIGINATOR: CITY\_OF\_MADISON



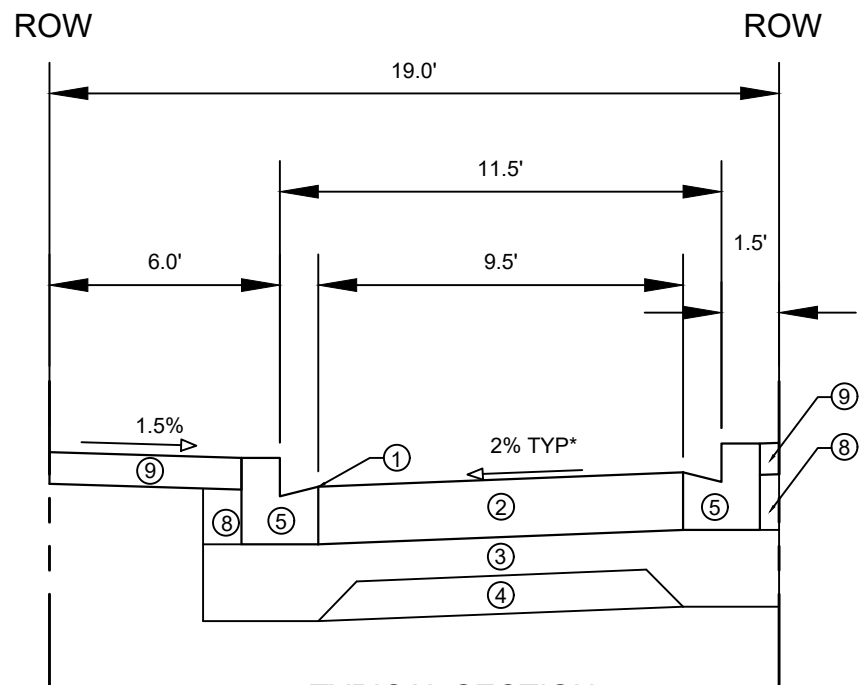
TYPICAL SECTION  
HAWTHORNE COURT  
STA 100+34.52 - STA 100+67.75



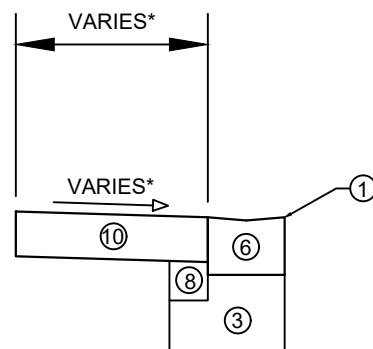
TYPICAL SECTION  
HAWTHORNE COURT BUS ENTRANCE  
STA 103+58.11 - STA 104+17.01



TYPICAL SECTION  
N. LAKE ST  
STA 101+55.85 - STA 104+22.55



TYPICAL SECTION  
HAWTHORNE COURT  
STA 100+74.75 - STA 102+98.75



TYPICAL SECTION  
HAWTHORNE COURT TURNAROUND

- ① POINT REFERRED TO ON PROFILE
- ② 9" CONCRETE PAVEMENT
- ③ 6" CRUSHED AGGREGATE BASE COURSE GRADATION 2 (UPPER LAYER)
- ④ 6" CRUSHED AGGREGATE BASE COURSE GRADATION 1 (LOWER LAYER)
- ⑤ MODIFIED TYPE 'H' CONCRETE CURB & GUTTER (DETAIL 1)
- ⑥ MODIFIED TYPE 'H' CONCRETE CURB & GUTTER CURB CUT (DETAIL 2)
- ⑦ MODIFIED TYPE 'H' CONCRETE CURB & GUTTER REINFORCED CURB CUT (DETAIL 3)
- ⑧ FILL INCIDENTAL TO CURB AND GUTTER INSTALLATION
- ⑨ 5" CONCRETE SIDEWALK
- ⑩ 7" CONCRETE SIDEWALK & DRIVE
- ⑪ COLORED 7" CONCRETE (NATURAL BARK)
- ⑫ 2" HMA PAVEMENT 4 MT 58-28 S (UPPER LAYER)
- ⑬ 3.5" HMA PAVEMENT 3 MT 58-28 S (LOWER LAYER)

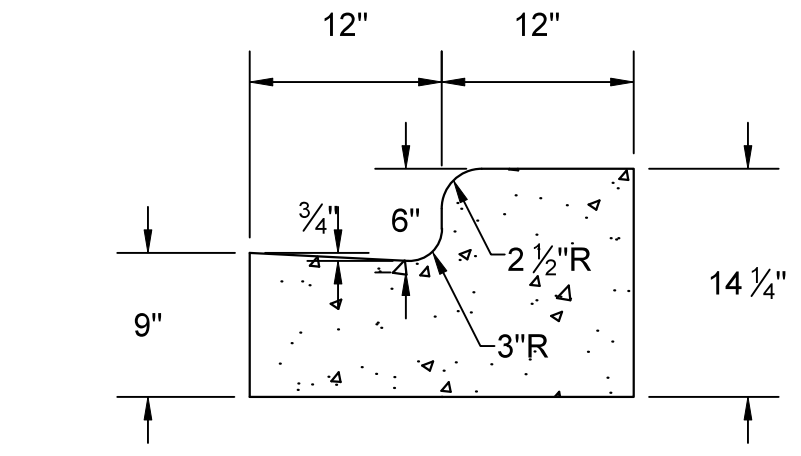
NOTES:  
 - TYPICAL SECTIONS NOT TO SCALE  
 - SEE PRIVATE DEVELOPMENT PLANS FOR N. LAKE ST LOCATED AT:  
[HTTPS://WWW.CITYOFMADISON.COM/BUSINESS/PW/UTILITYPLANS/](https://www.cityofmadison.com/business/pw/utilityplans/)  
 (PROJECT 14892 - LAKE ST., N., 415., STATE STREET CAMPUS GARAGE MIXED USE)  
 \*SEE X-SHEETS FOR CROSS SLOPES AND WIDTHS

ADD 1	REVISION	DATE	BY
ADD 1	ADDENDUM 1	12/15/25	RES
		12/17/2025	3:19 PM
	Designed By:		14636
	Scale:		D-1

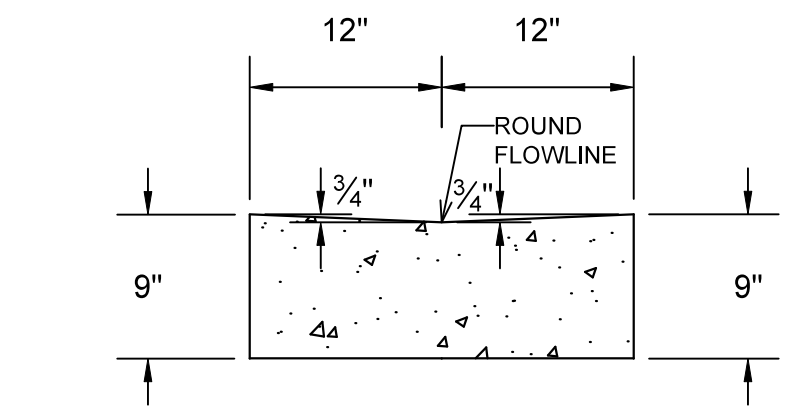
14636  
 HAWTHORNE COURT RECONSTRUCTION ASSESSMENT DISTRICT - 2023  
 MADISON, WI  
 CONTRACT NO: 8733  
 M:\DESIGN\Projects\14636\CAD\Streets\14636EN-Details.dwg



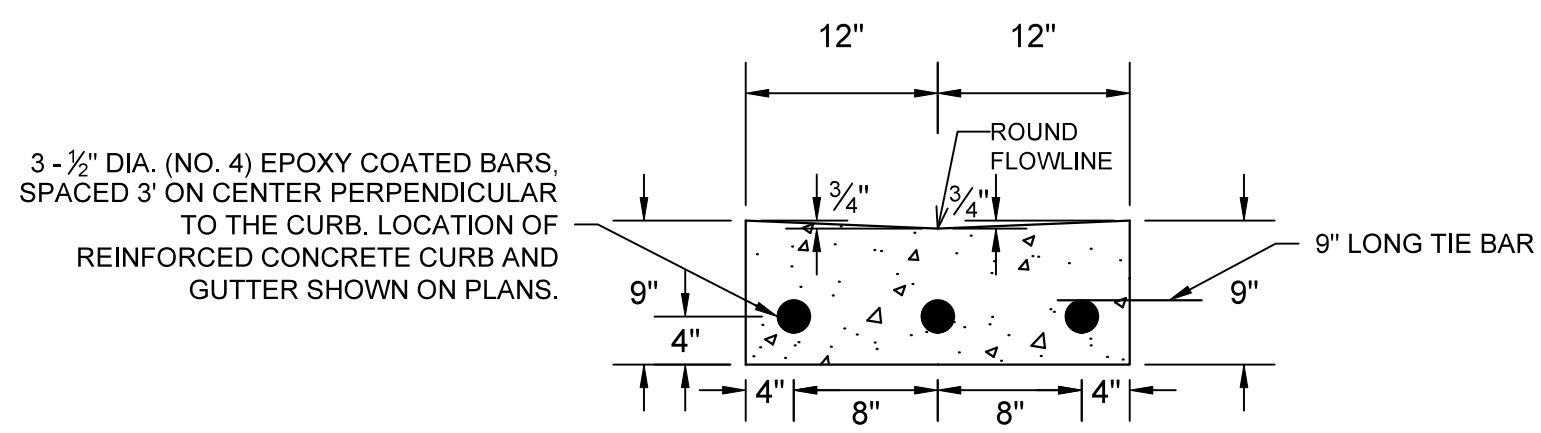
14636  
 D-1



**DETAIL 1 - MODIFIED TYPE 'H' CONCRETE CURB & GUTTER**



**DETAIL 2 - MODIFIED TYPE 'H' CONCRETE CURB & GUTTER CURB CUT**



3 - 1/2" DIA. (NO. 4) EPOXY COATED BARS, SPACED 3' ON CENTER PERPENDICULAR TO THE CURB. LOCATION OF REINFORCED CONCRETE CURB AND GUTTER SHOWN ON PLANS.

9" LONG TIE BAR

**DETAIL 3 - MODIFIED TYPE 'H' CONCRETE CURB & GUTTER REINFORCED CURB CUT**

NOTES:  
 SEE P-SHEETS FOR LOCATIONS OF REINFORCED CURB & GUTTER  
 \* SEAL ALL EXPOSED SURFACES OF 1/2" JOINT FILLER (1/2" MIN. DEEP AND HOLD 1/8" BELOW SURFACE OF CONCRETE). COLOR OF JOINT SEALER TO BE VERIFIED BY ENGINEER.

MARK	REVISION	DATE	BY
14636		10/30/2025	2:59 PM
Designed By:	Scale:		
			D-2

CONSTRUCTION DETAILS  
 14636  
 HAWTHORNE COURT RECONSTRUCTION ASSESSMENT DISTRICT - 2023  
 MADISON, WI  
 CONTRACT NO: 8733  
 M:\DESIGN\Projects\14636\CAD\Streets\14636EN-Details.dwg



14636  
 D-2



- Notes:
- COLOR  
BACKGROUND = ORANGE  
MESSAGE = BLACK  
BORDER = BLACK
  - LETTERING SERIES = C
  - MINIMUM SIGN REFLECTIVITY = HIGH INTENSITY PRISMATIC GRADE
  - SIGN MATERIAL MAY BE PLASTIC OR METAL
  - CONTRACTOR SHALL MAINTAIN SIGNS FOR DURATION OF PROJECT ATTACHED TO TYPE III BARRICADE



14636

D-3

PROJECT SIGN DETAIL

HAWTHORNE COURT RECONSTRUCTION ASSESSMENT DISTRICT - 2023 MADISON, WI

M:\DESIGN\Projects\14636\CAD\Traffic\14636TE-PavementMarking.dwg

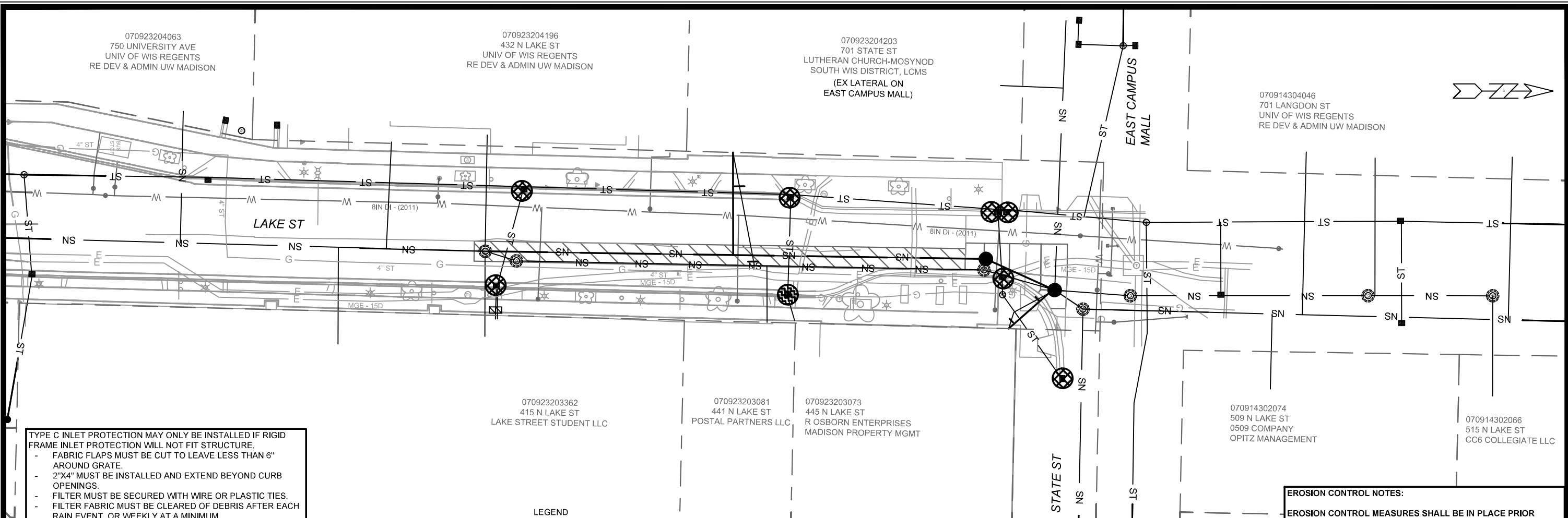
14636

CONTRACT NO: 8733

MARK	REVISION	DATE	BY
14636	10/30/2025 3:08 PM		

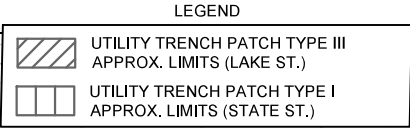
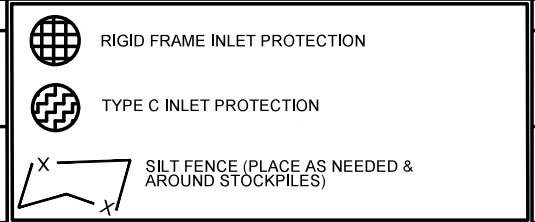
D-3





TYPE C INLET PROTECTION MAY ONLY BE INSTALLED IF RIGID FRAME INLET PROTECTION WILL NOT FIT STRUCTURE.

- FABRIC FLAPS MUST BE CUT TO LEAVE LESS THAN 6" AROUND GRATE.
- 2"X4" MUST BE INSTALLED AND EXTEND BEYOND CURB OPENINGS.
- FILTER MUST BE SECURED WITH WIRE OR PLASTIC TIES.
- FILTER FABRIC MUST BE CLEARED OF DEBRIS AFTER EACH RAIN EVENT, OR WEEKLY AT A MINIMUM.



**EROSION CONTROL NOTES:**

EROSION CONTROL MEASURES SHALL BE IN PLACE PRIOR TO ANY OTHER CONSTRUCTION ACTIVITY.

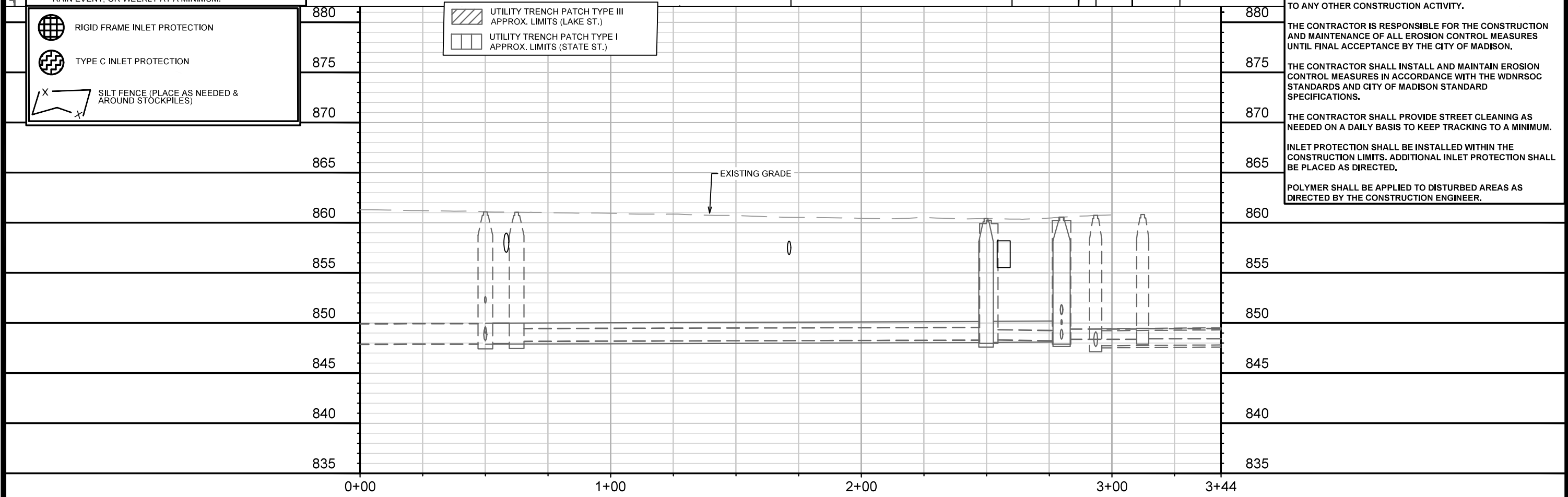
THE CONTRACTOR IS RESPONSIBLE FOR THE CONSTRUCTION AND MAINTENANCE OF ALL EROSION CONTROL MEASURES UNTIL FINAL ACCEPTANCE BY THE CITY OF MADISON.

THE CONTRACTOR SHALL INSTALL AND MAINTAIN EROSION CONTROL MEASURES IN ACCORDANCE WITH THE WDNR SOC STANDARDS AND CITY OF MADISON STANDARD SPECIFICATIONS.

THE CONTRACTOR SHALL PROVIDE STREET CLEANING AS NEEDED ON A DAILY BASIS TO KEEP TRACKING TO A MINIMUM.

INLET PROTECTION SHALL BE INSTALLED WITHIN THE CONSTRUCTION LIMITS. ADDITIONAL INLET PROTECTION SHALL BE PLACED AS DIRECTED.

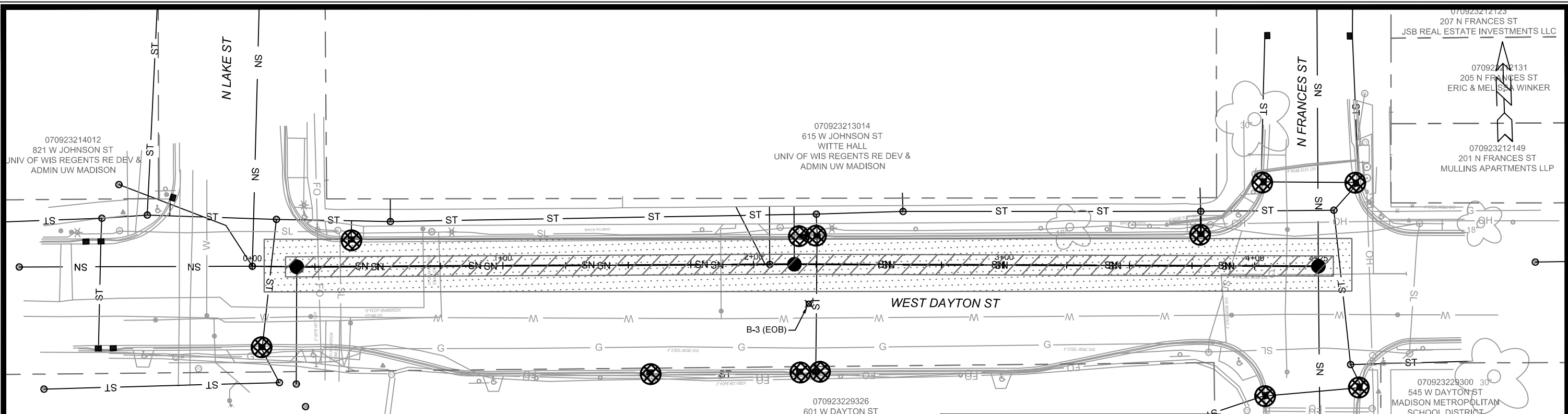
POLYMER SHALL BE APPLIED TO DISTURBED AREAS AS DIRECTED BY THE CONSTRUCTION ENGINEER.



DATE	BY
REVISION	BY
MARK	15938
Designed By: ##	15938
Date: 11/12/2025 4:44 PM	Scale: 1" = 40'

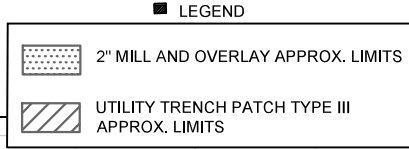
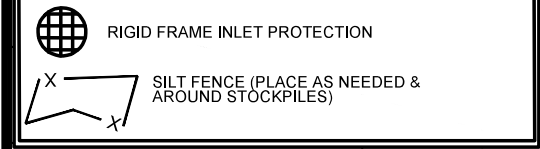
15938  
MADISON, WI  
EROSION CONTROL PLAN - N. LAKE ST  
LAKE STREET SANITARY SEWER REPLACEMENT ASSESSMENT DISTRICT - 2025  
CONTRACT NO.: 8733  
EC-2

M:\DESIGN\Projects\14636\CAD\Sewers\15938\WR-ErosionControl.dwg



TYPE C INLET PROTECTION MAY ONLY BE INSTALLED IF RIGID FRAME INLET PROTECTION WILL NOT FIT STRUCTURE.

- FABRIC FLAPS MUST BE CUT TO LEAVE LESS THAN 6" AROUND GRATE.
- 2"x4" MUST BE INSTALLED AND EXTEND BEYOND CURB OPENINGS.
- FILTER MUST BE SECURED WITH WIRE OR PLASTIC TIES.
- FILTER FABRIC MUST BE CLEARED OF DEBRIS AFTER EACH RAIN EVENT, OR WEEKLY AT A MINIMUM.



**EROSION CONTROL NOTES:**

EROSION CONTROL MEASURES SHALL BE IN PLACE PRIOR TO ANY OTHER CONSTRUCTION ACTIVITY.

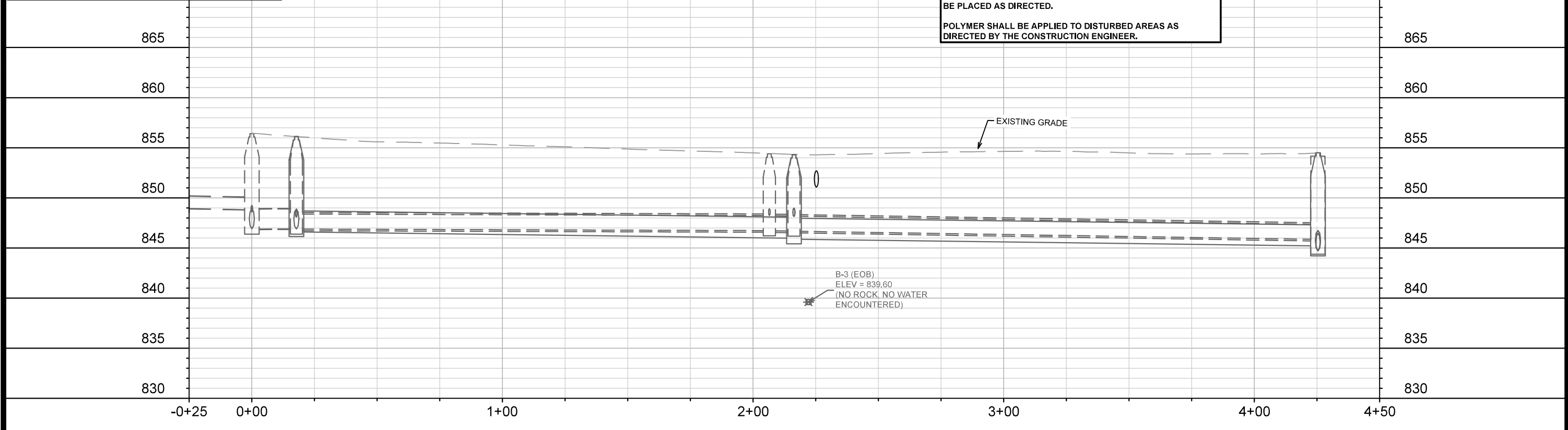
THE CONTRACTOR IS RESPONSIBLE FOR THE CONSTRUCTION AND MAINTENANCE OF ALL EROSION CONTROL MEASURES UNTIL FINAL ACCEPTANCE BY THE CITY OF MADISON.

THE CONTRACTOR SHALL INSTALL AND MAINTAIN EROSION CONTROL MEASURES IN ACCORDANCE WITH THE WDNRSOC STANDARDS AND CITY OF MADISON STANDARD SPECIFICATIONS.

THE CONTRACTOR SHALL PROVIDE STREET CLEANING AS NEEDED ON A DAILY BASIS TO KEEP TRACKING TO A MINIMUM.

INLET PROTECTION SHALL BE INSTALLED WITHIN THE CONSTRUCTION LIMITS. ADDITIONAL INLET PROTECTION SHALL BE PLACED AS DIRECTED.

POLYMER SHALL BE APPLIED TO DISTURBED AREAS AS DIRECTED BY THE CONSTRUCTION ENGINEER.



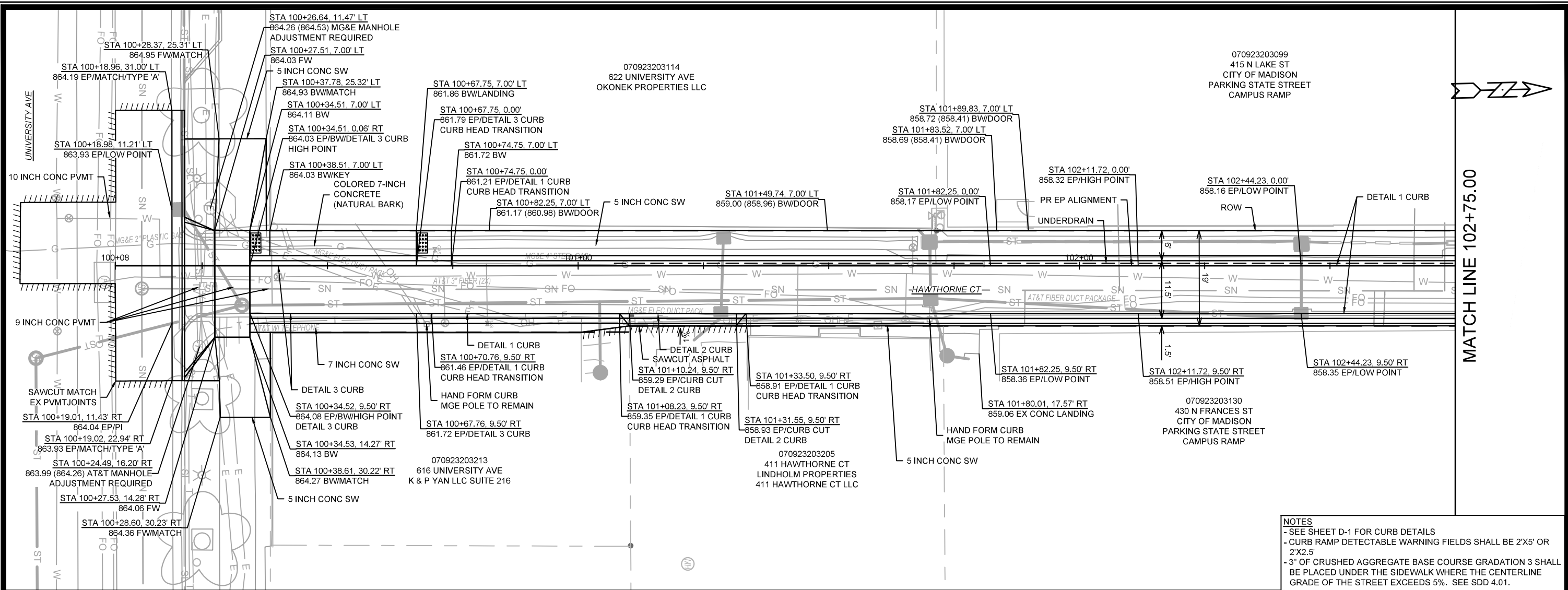
MARK	REVISION	DATE	BY

15938  
 WEST DAYTON STREET SANITARY REPLACEMENT ASSESSMENT DISTRICT - 2025  
 MADISON, WI  
 CONTRACT NO: 8733

EROSION CONTROL PLAN - W. DAYTON ST  
 WEST DAYTON STREET SANITARY REPLACEMENT ASSESSMENT DISTRICT - 2025  
 MADISON, WI  
 M:\DESIGN\Projects\14636\CAD\Sewers\14636SWR-ErosionControl.dwg

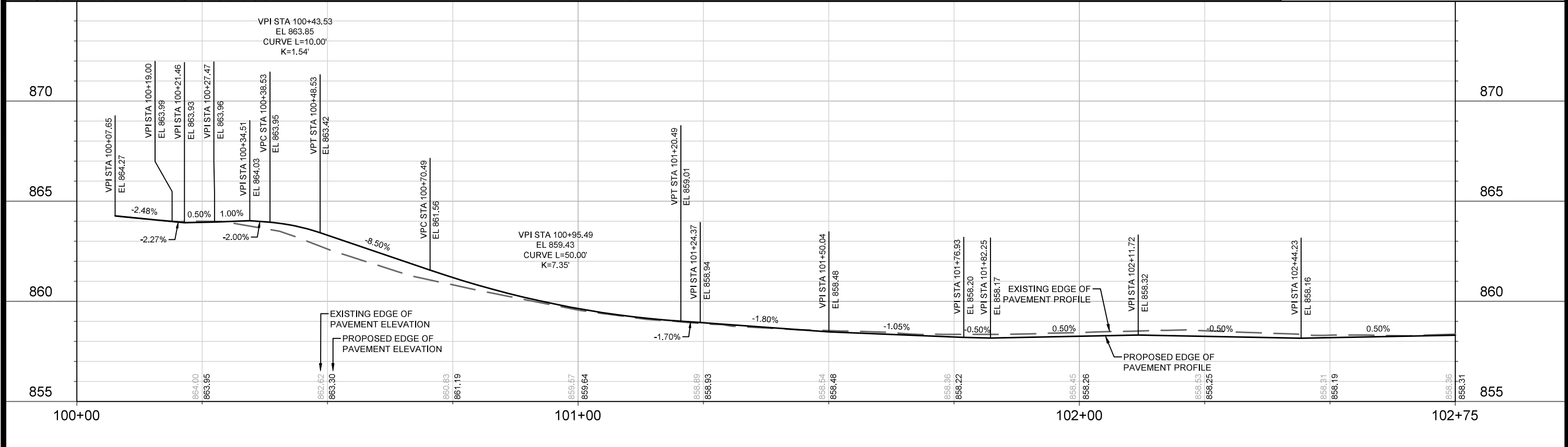


15938  
 EC-3



**NOTES**

- SEE SHEET D-1 FOR CURB DETAILS
- CURB RAMP DETECTABLE WARNING FIELDS SHALL BE 2'X5' OR 2'X2.5'
- 3" OF CRUSHED AGGREGATE BASE COURSE GRADATION 3 SHALL BE PLACED UNDER THE SIDEWALK WHERE THE CENTERLINE GRADE OF THE STREET EXCEEDS 5%. SEE SDD 4.01.



DATE	BY
REVISION	BY
MARK	DATE
14636	12/3/2025 9:18 AM
Scale: 1" = 20'	

14636

MADISON, WI

8733

CONTRACT NO:

14636

STREET PLAN & PROFILE - HAWTHORNE CT

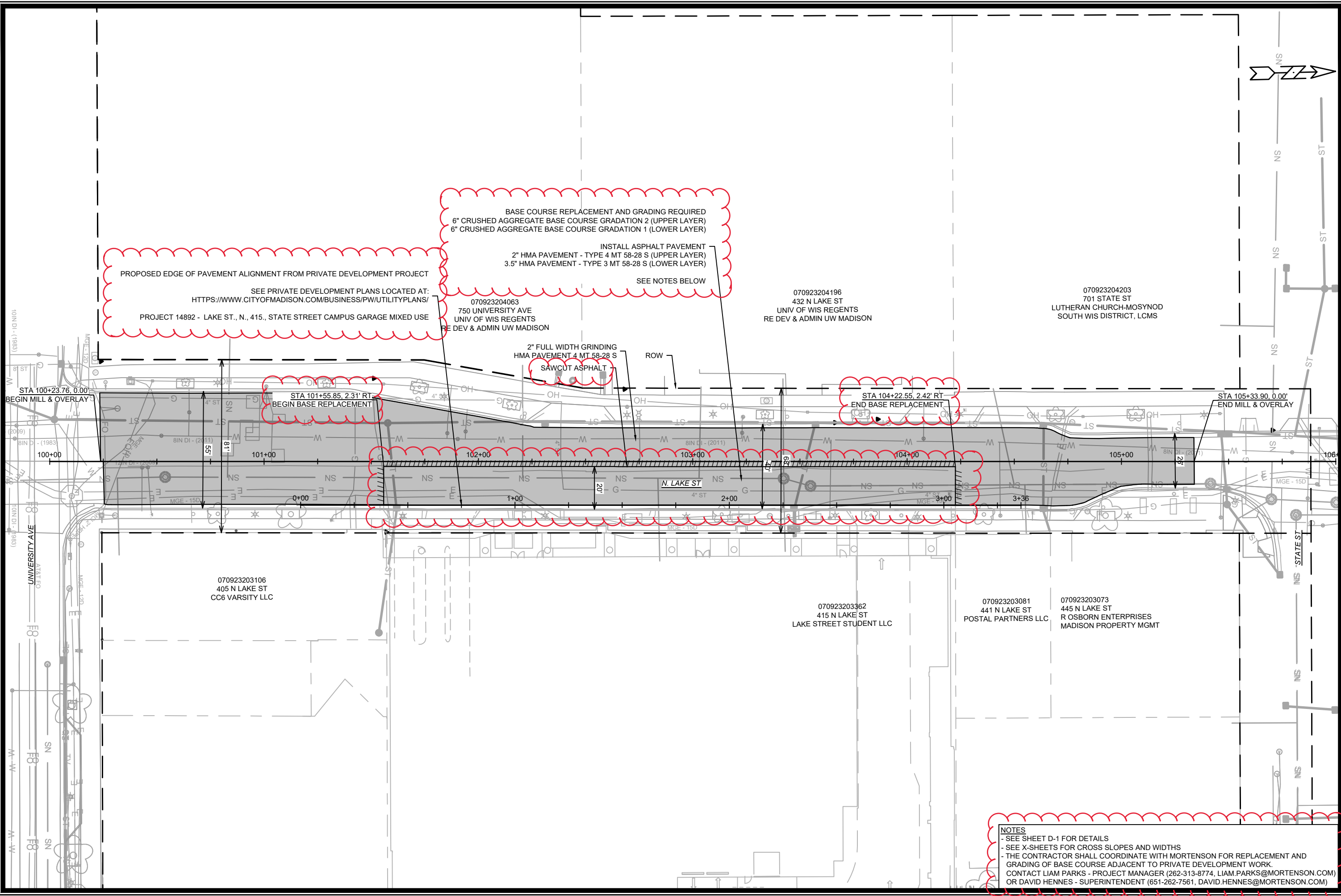
HAWTHORNE COURT RECONSTRUCTION ASSESSMENT DISTRICT - 2023

M:\DESIGN\Projects\14636\CAD\Streets\14636EN-PrP\_Hawthorne Ct.dwg

14636

P-1





PROPOSED EDGE OF PAVEMENT ALIGNMENT FROM PRIVATE DEVELOPMENT PROJECT  
 SEE PRIVATE DEVELOPMENT PLANS LOCATED AT:  
[HTTPS://WWW.CITYOFMADISON.COM/BUSINESS/PW/UTILITYPLANS/](https://www.cityofmadison.com/business/pw/utilityplans/)  
 PROJECT 14892 - LAKE ST., N., 415., STATE STREET CAMPUS GARAGE MIXED USE

BASE COURSE REPLACEMENT AND GRADING REQUIRED  
 6" CRUSHED AGGREGATE BASE COURSE GRADATION 2 (UPPER LAYER)  
 6" CRUSHED AGGREGATE BASE COURSE GRADATION 1 (LOWER LAYER)  
 INSTALL ASPHALT PAVEMENT  
 2" HMA PAVEMENT - TYPE 4 MT 58-28 S (UPPER LAYER)  
 3.5" HMA PAVEMENT - TYPE 3 MT 58-28 S (LOWER LAYER)  
 SEE NOTES BELOW

070923204063  
 750 UNIVERSITY AVE  
 UNIV OF WIS REGENTS  
 RE DEV & ADMIN UW MADISON

070923204196  
 432 N LAKE ST  
 UNIV OF WIS REGENTS  
 RE DEV & ADMIN UW MADISON

070923204203  
 701 STATE ST  
 LUTHERAN CHURCH-MOSYNOD  
 SOUTH WIS DISTRICT, LCMS

2" FULL WIDTH GRINDING  
 HMA PAVEMENT 4 MT 58-28 S  
 SAWCUT ASPHALT

STA 100+23.76, 0.00'  
 BEGIN MILL & OVERLAY

STA 101+55.85, 2.31' RT  
 BEGIN BASE REPLACEMENT

STA 104+22.55, 2.42' RT  
 END BASE REPLACEMENT

STA 105+33.90, 0.00'  
 END MILL & OVERLAY




070923203106  
 405 N LAKE ST  
 CC6 VARSITY LLC

070923203362  
 415 N LAKE ST  
 LAKE STREET STUDENT LLC

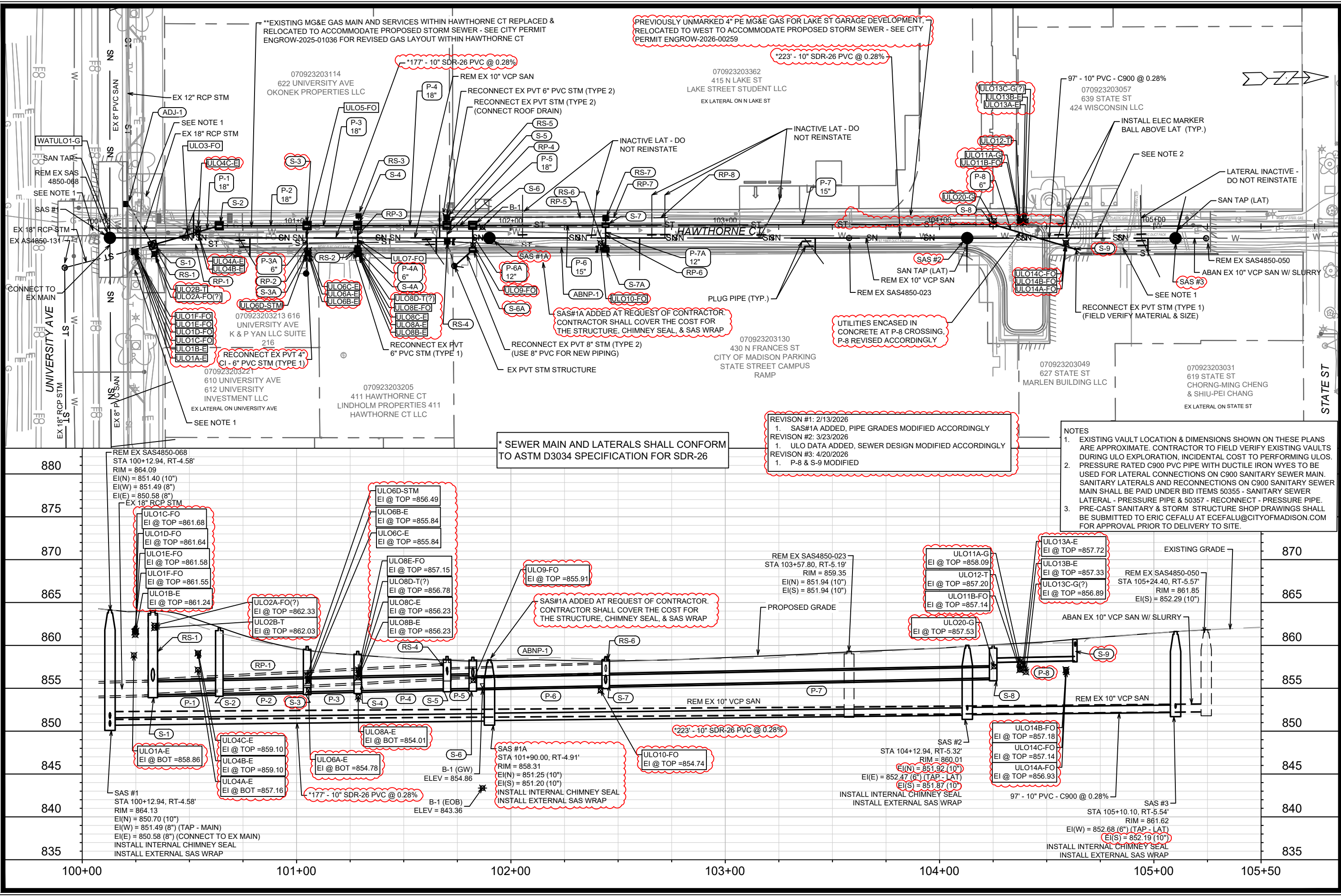
070923203081  
 441 N LAKE ST  
 POSTAL PARTNERS LLC

070923203073  
 445 N LAKE ST  
 R OSBORN ENTERPRISES  
 MADISON PROPERTY MGMT

**NOTES**  
 - SEE SHEET D-1 FOR DETAILS  
 - SEE X-SHEETS FOR CROSS SLOPES AND WIDTHS  
 - THE CONTRACTOR SHALL COORDINATE WITH MORTENSON FOR REPLACEMENT AND GRADING OF BASE COURSE ADJACENT TO PRIVATE DEVELOPMENT WORK.  
 CONTACT LIAM PARKS - PROJECT MANAGER (262-313-8774, LIAM.PARKS@MORTENSON.COM)  
 OR DAVID HENNES - SUPERINTENDENT (651-262-7561, DAVID.HENNES@MORTENSON.COM)

15938		MADISON, WI		CONTRACT NO: 8733	
STREET PLAN - N. LAKE ST		LAKE STREET SANITARY SEWER REPLACEMENT ASSESSMENT DISTRICT - 2025		P-3	
					
15938		15938		15938	
P-3		P-3		P-3	

M:\DESIGN\Projects\14636\CAD\Streets\14636EN-PrP\_N LAKE ST.dwg  
 M:\DESIGN\Projects\14636\CAD\Streets\14636EN-PrP\_N LAKE ST.dwg  
 M:\DESIGN\Projects\14636\CAD\Streets\14636EN-PrP\_N LAKE ST.dwg



\*\*EXISTING MG&E GAS MAIN AND SERVICES WITHIN HAWTHORNE CT REPLACED & RELOCATED TO ACCOMMODATE PROPOSED STORM SEWER - SEE CITY PERMIT ENGROW-2025-01036 FOR REVISED GAS LAYOUT WITHIN HAWTHORNE CT

PREVIOUSLY UNMARKED 4" PE MG&E GAS FOR LAKE ST GARAGE DEVELOPMENT, RELOCATED TO WEST TO ACCOMMODATE PROPOSED STORM SEWER - SEE CITY PERMIT ENGROW-2026-00259

\* SEWER MAIN AND LATERALS SHALL CONFORM TO ASTM D3034 SPECIFICATION FOR SDR-26

REVISION #1: 2/13/2026  
 1. SAS#1A ADDED, PIPE GRADES MODIFIED ACCORDINGLY  
 REVISION #2: 3/23/2026  
 1. ULO DATA ADDED, SEWER DESIGN MODIFIED ACCORDINGLY  
 REVISION #3: 4/20/2026  
 1. P-8 & S-9 MODIFIED

NOTES  
 1. EXISTING VAULT LOCATION & DIMENSIONS SHOWN ON THESE PLANS ARE APPROXIMATE. CONTRACTOR TO FIELD VERIFY EXISTING VAULTS DURING ULO EXPLORATION, INCIDENTAL COST TO PERFORMING ULOS.  
 2. PRESSURE RATED C900 PVC PIPE WITH DUCTILE IRON WYES TO BE USED FOR LATERAL CONNECTIONS ON C900 SANITARY SEWER MAIN. SANITARY LATERALS AND RECONNECTIONS ON C900 SANITARY SEWER MAIN SHALL BE PAID UNDER BID ITEMS 50355 - SANITARY SEWER LATERAL - PRESSURE PIPE & 50357 - RECONNECT - PRESSURE PIPE.  
 3. PRE-CAST SANITARY & STORM STRUCTURE SHOP DRAWINGS SHALL BE SUBMITTED TO ERIC CEFALU AT CEFALU@CITYOFMADISON.COM FOR APPROVAL PRIOR TO DELIVERY TO SITE.

4/20/26	EAC	U-1
3/23/26	EAC	
2/13/26	EAC	
	BY	
	DATE	
	REVISION	
	SAS#1A ADDED	
	ULO DATA ADDED	
	P-8 & S-9 MODIFIED	

Scale: 1" = 40'

Designed By: EEA Date: 4/20/2026 9:38 AM

14636

14636

MADISON, WI

HAWTHORNE COURT RECONSTRUCTION ASSESSMENT DISTRICT - 2023

CONTRACT NO: 8733

U-1

14636

U-1

# SANITARY SEWER SCHEDULE

REVISION 1 - 2/13/2026 EAC

HAWTHORNE COURT RECONSTRUCTION  
ASSESSMENT DISTRICT - 2023  
PROJECT NO. 14636  
SANITARY SEWER SCHEDULE  
CITY OF MADISON

SHEET NO.  
U-2

U-2

## PROPOSED SANITARY STRUCTURES

SAS NO.	STATION	LOCATION (OFFSET)	TOP OF CASTING	E.I.	DEPTH (FT)	NOTES
<b>HAWTHORNE COURT</b>						
• SAS #1	100+12.94	RT-4.58	864.13	850.58	13.55	[1]; [2]; [3]; [4]
• SAS #1A	101+90.00	RT-4.91	858.31	851.20	7.11	[1]; [2]; [7]
• SAS #2	104+12.94	RT-5.32	860.01	851.87	8.14	[1]; [2]
• SAS #3	105+10.10	RT-5.54	861.62	852.19	9.43	[1]; [2]; [5]

## PROPOSED SANITARY PIPES

FROM (DNSTM)	TO (UPSTM)	DWNSTRM E.I.	UPSTRM E.I.	PLAN LGTH (FT)	SLOPE (%)	PVC TYPE	NOTES
<b>HAWTHORNE COURT</b>							
• SAS #1	SAS #1A	850.70	851.20	177	0.28%	10"	SDR-26
• SAS #1A	SAS #2	851.25	851.87	223	0.28%	10"	SDR-26
• SAS #2	SAS #3	851.92	852.19	97	0.28%	10"	[6]; C-900

## SANITARY STRUCTURE REMOVALS & ABANDONMENTS

STRUC ID NO.	STATION	LOCATION (OFFSET)	TOP OF CASTING	E.I.	DEPTH	NOTES
<b>HAWTHORNE COURT</b>						
SAS4850-068	100+12.94	RT-4.58	864.09	850.58	13.51	4' DIA.
SAS4850-023	103+57.80	RT-5.19	859.35	851.94	7.41	4'X4' RECT.
SAS4850-050	105+24.40	RT-5.57	861.85	852.29	9.56	4' DIA.

## SANITARY PIPE REMOVALS & ABANDONMENTS

REMOVE FROM	REMOVE TO	LGTH (FT)	PAID (Y/N)	REM LGTH (FT)	REM LGTH PAID (FT)	ABN LGTH (FT)	SLURRY CY	PIPE SIZE	PIPE TYPE	NOTES
<b>HAWTHORNE COURT</b>										
SAS4850-068	SAS4850-023	345	N	345	-	-	-	10"	VCP	
SAS4850-023	SAS #3	152	N	152	-	-	-	10"	VCP	
SAS #3	SAS4850-050	14	Y	-	-	-	14 0.28	10"	VCP	

## SPECIFIC NOTES

- [1] INSTALL RIGID INTERNAL CHIMNEY SEAL IN CONFORMANCE WITH S.D.D. 5.7.17
- [2] INSTALL EXTERNAL SAS WRAP IN CONFORMANCE WITH S.D.D. 5.7.2
- [3] CONNECT TO EX 8" PVC MAIN (E(E) = 850.58)
- [4] 8" TAP (E(W) = 851.49) FOR UPSTREAM MAIN CONNECTION
- [5] 6" TAP (E(W) = 852.68) FOR LATERAL CONNECTION
- [6] DUCTILE IRON WYES TO BE USED FOR LATERAL CONNECTIONS ON C-900 SANITARY SEWER MAIN
- [7] SAS#1A ADDED AT REQUEST OF CONTRACTOR - CONTRACTOR SHALL COVER THE COST FOR THE STRUCTURE, CHIMNEY SEAL & SAS WRAP

# STORM SEWER SCHEDULE

⊕ REVISION 2 - 3/23/2026 EAC

⊖ REVISION 3 - 4/20/2026 EAC

HAWTHORNE COURT RECONSTRUCTION ASSESSMENT DISTRICT - 2023 PROJECT NO. 14636	SHEET NO. U-3
STORM SEWER SCHEDULE	
CITY OF MADISON	

## PROPOSED STORM STRUCTURES

STRUC. NO.	STATION	LOCATION (OFFSET)	TYPE	TOP OF CASTING	E.I.	DEPTH	NOTES
<b>HAWTHORNE COURT</b>							
S-1	100+32.95	RT-7.92	3'X3' STORM SAS	864.05	854.24	9.81	[1]; [2]; W/R-1550-0054
S-2	100+63.95	LT-1.00	3'X3' STORM SAS	862.05	854.40	7.65	[3]; R-3362-L
⊕ S-3	<b>101+04.93</b>	LT-1.00	3'X3' STORM SAS	<b>859.88</b>	854.60	<b>5.28</b>	W/R-3067-7004-V
⊕ S-3A	<b>101+04.91</b>	<b>RT-12.10</b>	<b>6" CLEANOUT</b>	<b>859.90</b>	<b>855.96</b>	<b>3.94</b>	<b>[4]; R-1976-5005</b>
S-4	101+28.55	LT-1.00	3'X3' STORM SAS	859.31	854.72	4.59	W/R-3067-7004-V
⊕ S-4A	101+28.55	RT-10.50	H-INLET	858.91	<b>856.50</b>	<b>2.41</b>	<b>[3]; [5]; FP; R-3362-L</b>
S-5	101+70.20	LT-1.00	3'X3' STORM SAS	858.71	854.93	3.78	[6]; FP; W/R-3067-7004-V
S-6	101+82.23	LT-1.00	3'X3' STORM SAS	858.61	854.99	3.62	LP; FP; W/R-3067-7004-VB
⊕ S-6A	101+82.23	RT-10.50	H-INLET	858.80	<b>856.42</b>	<b>2.38</b>	<b>[7]; LP; FP; W/R-3067-7004-VB</b>
S-7	102+44.22	LT-1.00	H-INLET	858.60	855.30	3.30	LP; W/R-3067-7004-VB
S-7A	102+44.22	RT-10.50	H-INLET	858.79	855.61	3.18	LP; W/R-3067-7004-VB
S-8	104+25.00	LT-1.00	H-INLET	860.01	856.20	3.81	[3]; R-3362-L
⊕ ⊖ S-9	104+63.21	RT-10.50	<b>6" CLEANOUT</b>	860.79	<b>858.21</b>	<b>2.58</b>	<b>[8]; R-1976-5005</b>

## PROPOSED STORM PIPES

PIPE NO.	FROM (DNSTM)	TO (UPSTM)	DISCH. E.I.	INLET E.I.	PLAN (PAY) LGTH (FT)	PIPE LGTH (FT)	SLOPE (%)	PIPE SIZE	TYPE	NOTES
<b>HAWTHORNE COURT</b>										
P-1	S-1	S-2	854.24	854.40	32	29	0.55%	18"	RCP	
P-2	S-2	S-3	854.40	854.60	40	37	0.54%	18"	RCP	
P-3	S-3	S-4	854.60	854.72	24	21	0.57%	18"	RCP	
⊕ P-3A	S-3	S-3A	<b>855.89</b>	<b>855.96</b>	<b>13</b>	<b>12</b>	<b>0.58%</b>	<b>6"</b>	<b>PVC C-900</b>	<b>NCM</b>
P-4	S-4	S-5	854.72	854.93	42	39	0.54%	18"	RCP	
⊕ P-4A	S-4	S-4A	<b>856.44</b>	<b>856.50</b>	12	9	0.67%	<b>6"</b>	<b>PVC C-900</b>	<b>NCM</b>
P-5	S-5	S-6	854.93	854.99	12	9	0.67%	18"	RCP	
P-6	S-6	S-7	854.99	855.30	62	59	0.53%	15"	RCP	NCM
⊕ P-6A	S-6	S-6A	<b>856.36</b>	<b>856.42</b>	12	9	0.67%	12"	RCP	<b>NCM</b>
P-7	S-7	S-8	855.30	856.20	181	178	0.51%	15"	RCP	
P-7A	S-7	S-7A	855.55	855.61	12	10	0.60%	12"	RCP	
⊕ ⊖ P-8	S-8	S-9	<b>858.01</b>	<b>858.21</b>	40	37	0.54%	<b>6"</b>	<b>PVC C-900</b>	<b>NCM</b>

## SPECIFIC NOTES:

- [1] CONNECT TO EX 18" RCP STM MAIN WITH CONCRETE COLLAR (S-1) AFTER RS-1 REMOVAL, APPROX EI(SE) = 854.24
- [2] CONNECT TO EX 18" RCP STM MAIN WITH CONCRETE COLLAR (S-1) AFTER RS-1 REMOVAL, APPROX EI(SW) = 855.82
- [3] TOP OF INLET CASTING SET TO MATCH FLOWLINE OF ALLEY CURB / CURB CUT. SEE SHEET D-2
- ⊕ [4] **INSTALL 6" PVC C-900 CLEANOUT ATOP MG&E DUCT PACKAGE TO CONNECT EX 4" CI - 6" PVC PVT STM (TYPE 1 RECONNECT) IN CONFORMANCE WITH S.D.D. 5.7.41, APPROX EI(E) = 855.96, LOCATE CLEANOUT CASTING ON SIDEWALK, INSTALL STYROFOAM INSULATION BETWEEN TOP OF DUCT PACKAGE AND THE BOTTOM OF THE CLEANOUT WYE/PIPING (PAID UNDER BID ITEM 70101 - FURNISH & INSTALL STYROFOAM), COORDINATE WITH MG&E AS NEEDED PRIOR TO CONSTRUCTION**
- ⊕ [5] **CONNECT EX PVT 6" PVC STM (TYPE 1 RECONNECT), APPROX EI(SE) = 856.50, BUILD STRUCTURE AS SHALLOW AS POSSIBLE OVERTOP MG&E DUCT PACKAGE TO TIE IN PVT STM, PLACE RUBBERIZED MASTIC BARRIER ATOP MG&E DUCT PACKAGE AND FILL VOID SPACE BETWEEN TOP OF DUCT PACKAGE AND STRUCTURE BOTTOM WITH FLOWABLE FILL, COORDINATE WITH MG&E AS NEEDED PRIOR TO CONSTRUCTION**
- ⊕ [6] CONNECT EX PVT 6" PVC STM (TYPE 2 RECONNECT), APPROX EI(SW) = 856.94 & CONNECT EX ROOF DRAIN (TYPE 2 RECONNECT), APPROX EI(W) = 856.94
- [7] CONNECT EX PVT STM (TYPE 2 RECONNECT), APPROX EI(W) = 856.73 - USE 8" PVC FOR NEW PIPING
- [8] CONNECT EX PVT STM CURB SCUPPER (TYPE 1 RECONNECT) - CONTRACTOR TO FIELD VERIFY MATERIAL & SIZE, INSTALL BENDS AS NEEDED TO CONNECT TO S-9

## STANDARD NOTES:

- ABBREVIATIONS: AE = APRON ENDWALL; RCP = REINFORCED CONCRETE PIPE; HERCP = HORIZONTAL ELLIPTICAL REINFORCED CONCRETE PIPE; DNA = DOES NOT APPLY; SAS = SEWER ACCESS STRUCTURE; LP = LOW POINT INLET STRUCTURE; FP = FIELD POURED STRUCTURE; TR = TOP OF CONCRETE ROOF; NCM = NO CROWN MATCH FOR PIPES; UD = UNDERDRAIN
- PLAN LENGTH (PAY LENGTH) IS FROM CENTER OF STRUCTURE TO CENTER OF STRUCTURE. PIPE LENGTH IS ACTUAL LENGTH OF PIPE FROM STRUCTURE WALL TO STRUCTURE WALL. SLOPE CALCULATED USING PIPE LENGTH.
- TOP OF CASTING GRADE GIVEN IS THE TOP OF CURB FOR INLET STRUCTURES AND THE FLOWLINE OF THE CLOSED CASTING FOR SAS UNLESS NOTED OTHERWISE.
- APPROXIMATE DISCHARGE E.I. GIVEN, ADJUST E.I. AND PIPE SLOPE IN THE FIELD.
- ALL REINFORCED CONCRETE PIPES TO BE CLASS 3 UNLESS OTHERWISE NOTED.
- ALL FIELD POURED SAS STORM STRUCTURES SHALL BE CONSTRUCTED IN ACCORDANCE WITH STANDARD DETAIL DRAWING 5.7.3. ALL PRECAST SAS STORM STRUCTURES SHALL BE CONSTRUCTED IN ACCORDANCE WITH STANDARD DETAIL DRAWING 5.7.5.
- ALL STRUCTURES CALLED OUT AS FIELD POURED SHALL BE FIELD POURED. ALL OTHER STRUCTURES STORM AND SANITARY (NOT INDICATED AS FIELD POURED) SHALL BE SUBMITTED TO CITY ENGINEERING FOR APPROVAL ECEFALU@CITYOFMADISON.COM ((608) 243-5894).
- ALL REBAR FOR FIELD POURED STRUCTURES SHALL BE EPOXY COATED. ANY EXPOSED STEEL SHALL BE TOUCHED UP OR RECOATED PRIOR TO USE.
- SURVEYOR TO CONFIRM THAT ALL INLET STATION / OFFSETS LINE UP WITH PROPOSED CURB AND GUTTER.

# STORM SEWER SCHEDULE

## STORM STRUCTURE REMOVALS & ABANDONMENTS

STRUC. NO.	ID NO.	STATION	LOCATION (OFFSET)	TYPE	DEPTH (FT)	NOTES
<b>HAWTHORNE COURT</b>						
RS-1	IN4850-132	100+32.95	RT-7.92	4'X4' SAS	9.61	
RS-2	IN4850-059	101+28.50	RT-10.35	3'X3' SAS	3.23	
RS-3	IN4850-058	101+29.02	LT-6.51	H-INLET	3.08	
RS-4	IN4850-053	101+70.34	RT-6.52	3'X3' SAS	2.15	
RS-5	IN4850-054	101+70.13	LT-4.70	3'X3' SAS	1.39	
RS-6	IN4850-051	102+44.27	RT-10.52	H-INLET	1.90	
RS-7	IN4850-052	102+44.28	LT-4.27	3'X3' SAS	1.43	

## STORM STRUCTURE ADJUSTMENTS

STRUC. NO.	ID NO.	STATION	LOCATION (OFFSET)	EX TOC	PROP TOC	ADJ (FT)	NOTES
<b>HAWTHORNE COURT</b>							
ADJ-1	IN4850-133	100+21.42	LT-11.22	864.47	864.31	-0.16	

## STORM PIPE REMOVALS & ABANDONMENTS

PIPE REMOVAL NO.	REMOVE FROM	REMOVE TO	LGTH (FT)	PAID (Y/N)	REM LGTH PAID (FT)	ABN LGTH (FT)	SLURRY (CY)	PIPE SIZE	PIPE TYPE	NOTES
<b>HAWTHORNE COURT</b>										
RP-1	RS-1	RS-4	137	N	-	-	-	18"	RCP	
RP-2	RP-1 EX PVT STM CONNECTION #1	S-3A	5	N	-	-	-	4" - 6"	CI & PVC	
RP-3	RP-1 EX PVT STM CONNECTION #2	RS-3	13	N	-	-	-	12"	RCP	
RP-4	RS-4	RS-5	11	N	-	-	-	8"	RCP	
RP-5	RS-5	RS-7	74	N	-	-	-	8"	PVC SLOT DRAIN	
RP-6	RS-6	RS-7	15	N	-	-	-	10"	PVC	
RP-7	RS-7	SLOT DRAIN BREAK #1	5	N	-	-	-	8"	PVC SLOT DRAIN	
RP-8	SLOT DRAIN BREAK #2	SLOT DRAIN BREAK #3	7	N	-	-	-	8"	PVC SLOT DRAIN	
ABNP-1	RS-4	RS-6	74	Y	-	74	2.15	12"	RCP	

## STORM ULO SCHEDULE

ID NO.	STATION	LOCATION (OFFSET)	TYPE	NOTES
<b>HAWTHORNE COURT</b>				
ULO1A-E	100+24.12	RT-11.00		DUCT PACK, BOTTOM @ 858.86', NO CONFLICT
ULO1B-E	100+24.70	RT-11.21		DUCT PACK, TOP @ 861.24', NO CONFLICT
ULO1C-FO	100+25.12	RT-10.93		2" FIBER OPTIC, TOP @ 861.68' - NO CONFLICT
ULO1D-FO	100+24.91	RT-10.88		2" FIBER OPTIC, TOP @ 861.64' - NO CONFLICT
ULO1E-FO	100+24.76	RT-10.80		2" FIBER OPTIC, TOP @ 861.58' - NO CONFLICT
ULO1F-FO	100+24.46	RT-10.84		2" FIBER OPTIC, TOP @ 861.55' - NO CONFLICT
ULO2A-FO(?)	100+33.76	RT-12.31		2" AT&T FIBER OPTIC(?), TOP @ 862.33' - NO CONFLICT BUT USE CAUTION DURING S-1 INSTALL
ULO2B-T	100+33.66	RT-11.90		1" AT&T WI TELEPHONE, TOP @ 862.03' - NO CONFLICT BUT USE CAUTION DURING S-1 INSTALL
ULO3-FO	100+49.16	RT-3.26		AT&T FIBER OPTC (2X) - AT&T CONFIRMED CONDUITS ARE INACTIVE (ULO NOT PERFORMED), NO CONFLICT
ULO4A-E	100+53.95	RT-2.02		MG&E ELECTRIC DUCT PACK, BOTTOM @ 857.16', NO CONFLICT
ULO4B-E	100+53.91	RT-1.99		MG&E ELECTRIC DUCT PACK, TOP @ 859.10', NO CONFLICT
ULO4C-E	100+54.16	RT-0.45		MG&E ELECTRIC DUCT PACK, TOP @ 859.10', NO CONFLICT
ULO5-FO	101+04.26	RT-4.82		AT&T FIBER OPTC (2X) - AT&T CONFIRMED CONDUITS ARE INACTIVE (ULO NOT PERFORMED), NO CONFLICT
ULO6A-E	101+05.60	RT-12.03		MG&E ELECTRIC DUCT PACK, BOTTOM @ 854.78', CONFLICT - STORM DESIGN REVISED TO AVOID
ULO6B-E	101+05.32	RT-12.03		MG&E ELECTRIC DUCT PACK, TOP @ 855.84', CONFLICT - STORM DESIGN REVISED TO AVOID
ULO6C-E	101+05.74	RT-10.54		MG&E ELECTRIC DUCT PACK, TOP @ 855.84', CONFLICT - STORM DESIGN REVISED TO AVOID, LESS THAN 6" SEPARATION, USE CAUTION
ULO7-FO	101+28.55	RT-5.53		AT&T FIBER OPTC (2X) - AT&T CONFIRMED CONDUITS ARE INACTIVE (ULO NOT PERFORMED), NO CONFLICT
ULO8A-E	101+28.76	RT-12.48		MG&E ELECTRIC DUCT PACK, BOTTOM @ 854.01', CONFLICT - STORM DESIGN REVISED TO AVOID
ULO8B-E	101+28.75	RT-12.50		MG&E ELECTRIC DUCT PACK, TOP @ 856.23', CONFLICT - STORM DESIGN REVISED TO AVOID
ULO8C-E	101+28.57	RT-11.50		MG&E ELECTRIC DUCT PACK, TOP @ 856.23', CONFLICT - STORM DESIGN REVISED TO AVOID, LESS THAN 6" SEPARATION, USE CAUTION
ULO8D-T(?)	101+29.15	RT-12.01		1" AT&T WI TELEPHONE (MAY BE INACTIVE), TOP @ 856.78', POSSIBLE CONFLICT BUT COULD BE EAST OF OF S-4A, SEE NOTE [1]
ULO8E-FO	101+28.88	RT-12.13		2" CHARTER FIBER OPTIC, TOP @ 857.15', POSSIBLE CONFLICT BUT COULD BE EAST OF S-4A, SEE NOTE [1]
ULO9-FO	101+82.41	RT-8.17		4" AT&T FIBER OPTIC, TOP @ 855.91', CONFLICT - STORM DESIGN REVISED TO AVOID, LESS THAN 6" SEPARATION, USE CAUTION
ULO10-FO	102+41.81	RT-7.43		4" AT&T FIBER OPTIC, TOP @ 854.74', NO CONFLICT
ULO11A-G	104+37.52	LT-2.77		4" PE GAS, TOP @ 858.09', RUNS NORTH-SOUTH ON HAWTHORNE CT UNDER WESTERN CURBLINE, LIKELY VERTICAL CONFLICTS WITH P-7. HORIZONTAL CONFLICTS WITH P-7 & POSSIBLY S-8 MG&E RELOCATED GAS MAIN FOR PROPOSED STORM SEWER INSTALLATION
ULO20-G				4" PE GAS, TOP @ 857.53', RUNS NORTH-SOUTH ON HAWTHORNE CT UNDER WESTERN CURBLINE, LIKELY VERTICAL CONFLICTS WITH P-7. HORIZONTAL CONFLICTS WITH P-7 & POSSIBLY S-8 MG&E RELOCATED GAS MAIN FOR PROPOSED STORM SEWER INSTALLATION
ULO11B-FO	104+37.38	LT-1.77		2" AT&T FIBER OPTIC(?), TOP @ 857.14', RUNS EAST-WEST ACROSS HAWTHORNE CT, NO CONFLICT
ULO12-T	104+37.60	LT-1.94		4" AT&T WI TELEPHONE, TOP @ 857.20', RUNS EAST-WEST ACROSS HAWTHORNE CT, NO CONFLICT
ULO13A-E	104+38.89	LT-2.14		4" MG&E ELECTRIC, TOP @ 857.72', RUNS EAST-WEST ACROSS HAWTHORNE CT, NO CONFLICT, LESS THAN 6" SEPARATION SO USE CAUTION
ULO13B-E	104+39.28	LT-1.91		4" MG&E ELECTRIC, TOP @ 857.33', RUNS EAST-WEST ACROSS HAWTHORNE CT, NO CONFLICT, LESS THAN 6" SEPARATION SO USE CAUTION
ULO13C-G(?)	104+40.29	LT-2.61		4" UNKNOWN BLACK METAL PIPE, TOP @ 856.89', RUNS NORTH-SOUTH ON HAWTHORNE CT UNDER WESTERN CURBLINE, DETERMINED TO BE EMPTY/INACTIVE IN FIELD DURING ULO INVESTIGATION BY CONTRACTOR
ULO14A-FO	104+59.11	RT-7.61		3" AT&T FIBER OPTIC, TOP @ 856.93', CONFLICT - STORM DESIGN REVISED TO AVOID
ULO14B-FO	104+58.95	RT-7.67		2" AT&T FIBER OPTIC, TOP @ 857.18', CONFLICT - STORM DESIGN REVISED TO AVOID
ULO14C-FO	104+58.89	RT-7.56		2" AT&T FIBER OPTIC, TOP @ 857.14', CONFLICT - STORM DESIGN REVISED TO AVOID
WATULO1-G	100+11.55	LT-4.05		2" PLASTIC MG&E GAS - NOT PERFORMED DURING INITIAL ULOS INVESTIGATION

## SPECIFIC NOTES

[1] THE CONTRACTOR SHALL COORDINATE WITH THE PRIVATE UTILITIES TO RELOCATE AND/OR ADJUST AS NEEDED IF IN CONFLICT WITH PROPOSED STORM STRUCTURE/PVT STORM CONNECTION



# SANITARY SEWER SCHEDULE

ϕ REVISION 2 - 3/23/2026 EAC

LAKE STREET SANITARY SEWER REPLACEMENT ASSESSMENT DISTRICT - 2025 PROJECT NO. 15938	SHEET NO. U-6
SANITARY SEWER SCHEDULE	
CITY OF MADISON	

U-6

## PROPOSED SANITARY STRUCTURES

SAS NO.	STATION	LOCATION (OFFSET)	TOP OF CASTING	E.I.	DEPTH (FT)	NOTES
<b>LAKE STREET SANITARY</b>						
SAS #20	2+49.77	CL	860.43	848.10	12.33	5' DIA; [1]; [2]
SAS #21	2+79.91	CL	860.55	848.14	12.41	6' DIA; [1]; [2]; [3]; [4]; [5]

## SANITARY STRUCTURE REMOVALS & ABANDONMENTS

STRUC ID NO.	STATION	LOCATION (OFFSET)	TOP OF CASTING	E.I.	DEPTH	NOTES
<b>LAKE STREET SANITARY</b>						
SAS4850-089	0+62.49	RT-3.64	861.05	847.96	13.09	5' DIA.
SAS4850-008	2+50.89	RT-4.32	860.25	848.30	11.95	5'X5' RECT.
SAS4850-007	2+79.91	CL	860.56	848.22	12.34	6'X6' RECT., OFFSET STRUCTURE

## SANITARY STRUCTURE ADJUSTMENTS/MODIFICATIONS

STRUC ID NO.	STATION	LOCATION (OFFSET)	TOP OF CASTING	PROP TOC	ADJ (FT)	NOTES
<b>LAKE STREET SANITARY</b>						
SAS4850-088	0+50.00	CL	861.09	-	-	[6]

## PROPOSED SANITARY PIPES

FROM (DNSTM)	TO (UPSTM)	DWNSTRM E.I.	UPSTRM E.I.	PLAN LGTH (FT)	SLOPE (%)	PVC TYPE	NOTES
<b>LAKE STREET SANITARY</b>							
SAS4850-008	SAS #20	847.94	848.10	200	0.08%	24"	PS-115
SAS #20	SAS #21	848.12	848.14	30	0.08%	24"	PS-115

## SANITARY PIPE REMOVALS & ABANDONMENTS

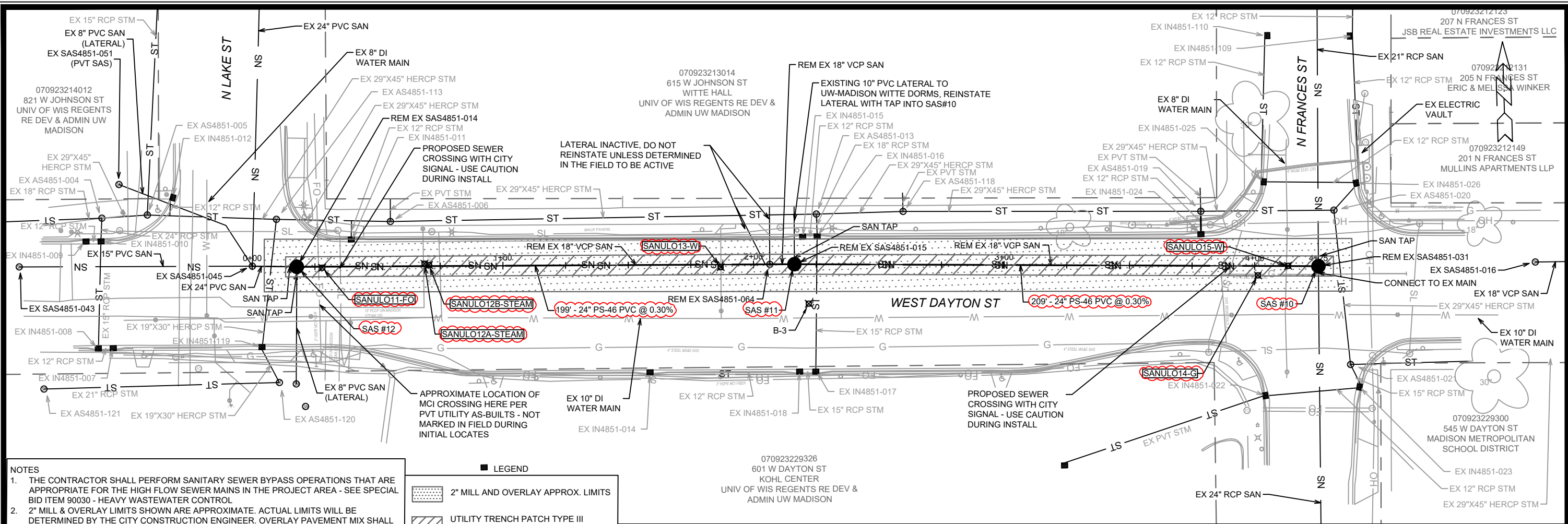
REMOVE FROM	REMOVE TO	LGTH (FT)	PAID (Y/N)	REM LGTH (FT)	REM LGTH PAID (FT)	ABN LGTH (FT)	SLURRY CY	PIPE SIZE	PIPE TYPE	NOTES
<b>LAKE STREET SANITARY</b>										
SAS4850-008	SAS4850-089	13	N	13	-	-	-	24"	PVC	
SAS4850-089	SAS4850-008	187	Y	-	-	187	7.40	14"	CI	
SAS4850-008	SAS4850-007	29	Y	-	-	29	0.84	12"	CI	

## SANITARY ULO SCHEDULE

ID NO. (OFFSET)	STATION	LOCATION (OFFSET)	TYPE
<b>LAKE STREET SANITARY</b>			
ϕ SANULO21A-G(?)	1+77.11	0+00.93	UNKNOWN 4" METAL PIPE, TOP @ 858.69', NO CONFLICT
ϕ SANULO21B-E	1+76.92	0+00.13	MG&E ELECTRIC DUCT PACK, TOP @ 857.90', NO CONFLICT
ϕ SANULO21C-E	1+78.38	0+00.75	MG&E ELECTRIC DUCT PACK, TOP @ 857.92', NO CONFLICT
ϕ SANULO21D-E	1+78.55	0+00.61	MG&E ELECTRIC DUCT PACK, BOTTOM @ 857.21', NO CONFLICT
ϕ SANULO21E-E	1+79.13	0+00.88	MG&E ELECTRIC DUCT PACK, BOTTOM @ 857.57', NO CONFLICT
ϕ SANULO21F-E	1+79.20	0+00.68	MG&E ELECTRIC DUCT PACK, TOP @ 858.34', NO CONFLICT
ϕ SANULO22A-E	2+20.31	-0+01.22	MG&E ELECTRIC DUCT PACK, TOP @ 856.95', NO CONFLICT
ϕ SANULO22B-E	2+20.31	-0+01.36	MG&E ELECTRIC DUCT PACK, BOTTOM @ 854.78', NO CONFLICT
ϕ SANULO22C-E	2+19.61	-0+00.63	MG&E ELECTRIC(?) DUCT PACK, TOP @ 857.78', NO CONFLICT
ϕ SANULO22D-E	2+19.46	0+00.88	MG&E ELECTRIC(?) DUCT PACK, TOP @ 857.48', NO CONFLICT
ϕ SANULO22E-E	2+20.49	-0+00.85	MG&E ELECTRIC DUCT PACK, BOTTOM @ 856.76', NO CONFLICT
ϕ SANULO22F-G(?)	2+19.55	0+01.56	4" METAL PIPE (ABANDONED GAS?), TOP @ 857.07', NO CONFLICT
ϕ SANULO23A-G	2+67.47	0+00.92	4" STEEL MG&E GAS, TOP @ 855.40', NO CONFLICT
ϕ SANULO23B-E	2+65.92	0+01.26	MG&E 15-D ELECTRIC DUCT PACK, TOP @ 855.19', NO CONFLICT
ϕ SANULO23C-E	2+66.02	0+01.17	MG&E 15-D ELECTRIC DUCT PACK, BOTTOM @ 853.19', NO CONFLICT

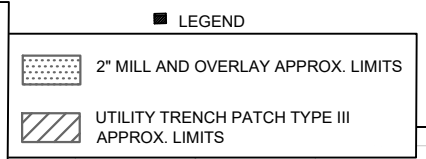
## SPECIFIC NOTES

- [1] INSTALL RIGID INTERNAL CHIMNEY SEAL IN CONFORMANCE WITH S.D.D. 5.7.17
- [2] INSTALL EXTERNAL SAS WRAP IN CONFORMANCE WITH S.D.D. 5.7.2
- [3] 12" TAP (EI(N) = 848.38) FOR UPSTREAM MAIN CONNECTION
- [4] 12" TAP (EI(W) = 850.83) FOR UPSTREAM MAIN CONNECTION, EI APPROXIMATED AS 1' ABOVE SE LAT BASED ON EXISTING STRUCTURE INSPECTION
- [5] 6" TAP (EI(SE) = 849.83) FOR EXISTING LATERAL CONNECTION
- [6] RE-USE EXISTING NORTHERN CORE FOR PROPOSED 24" SANITARY

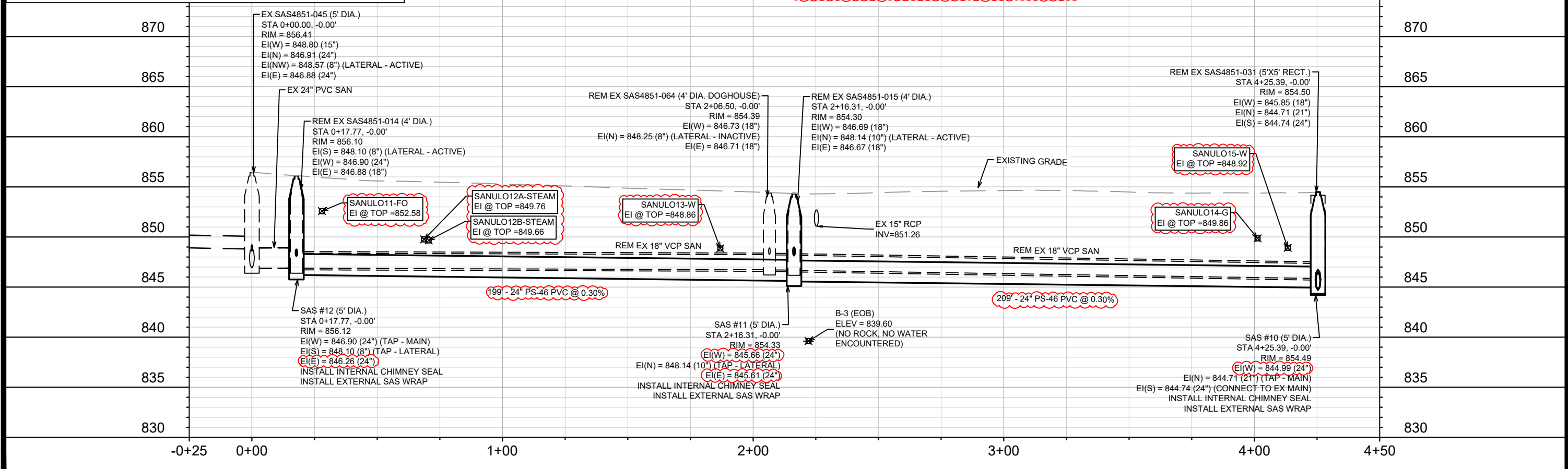


**NOTES**

1. THE CONTRACTOR SHALL PERFORM SANITARY SEWER BYPASS OPERATIONS THAT ARE APPROPRIATE FOR THE HIGH FLOW SEWER MAINS IN THE PROJECT AREA - SEE SPECIAL BID ITEM 90030 - HEAVY WASTEWATER CONTROL
2. 2" MILL & OVERLAY LIMITS SHOWN ARE APPROXIMATE. ACTUAL LIMITS WILL BE DETERMINED BY THE CITY CONSTRUCTION ENGINEER. OVERLAY PAVEMENT MIX SHALL BE 4 MT 58-28 S.
3. PRE-CAST SANITARY STRUCTURE SHOP DRAWINGS SHALL BE SUBMITTED TO ERIC CEFALU AT CEFALU@CITYOFMADISON.COM FOR APPROVAL PRIOR TO DELIVERY TO SITE.



**REVISION #2: 3/23/2026**  
 1. ULO DATA ADDED, SEWER DESIGN MODIFIED ACCORDINGLY



15938  
 MADISON, WI  
 WEST DAYTON STREET SANITARY REPLACEMENT ASSESSMENT DISTRICT - 2025  
 CONTRACT NO.: 8733  
 U-7

Scale: 1" = 40'  
 Date: 3/23/2026 2:47 PM  
 ULO DATA ADDED  
 REVISION  
 3/23/26  
 EAC  
 BY  
 U-7

15938  
 U-7

# SANITARY SEWER SCHEDULE

φ

REVISION 2 - 3/23/2026 EAC

WEST DAYTON STREET SANITARY  
REPLACEMENT ASSESSMENT DISTRICT - 2025  
PROJECT NO. 15938

SHEET NO.  
U-8

SANITARY SEWER SCHEDULE

CITY OF MADISON

U-8

## PROPOSED SANITARY STRUCTURES

SAS NO.	STATION	LOCATION (OFFSET)	TOP OF CASTING	E.I.	DEPTH (FT)	NOTES
<b>WEST DAYTON STREET SANITARY</b>						
SAS #10	4+25.39	CL	854.49	844.71	9.78	5' DIA; [1]; [2]; [3]; [4]
φ SAS #11	2+16.31	CL	854.33	845.61	8.72	5' DIA; [1]; [2]; [5]
φ SAS #12	0+17.77	CL	856.12	846.26	9.86	5' DIA; [1]; [2]; [6]; [7]

## PROPOSED SANITARY PIPES

FROM (DNSTM)	TO (UPSTM)	DWNSTRM E.I.	UPSTRM E.I.	PLAN LGTH (FT)	SLOPE (%)	PVC TYPE	NOTES
<b>WEST DAYTON STREET SANITARY</b>							
φ SAS #10	SAS #11	844.99	845.61	209	0.30%	24"	PS-46
φ SAS #11	SAS #12	845.66	846.26	199	0.30%	24"	PS-46

## SANITARY STRUCTURE REMOVALS & ABANDONMENTS

STRUC ID NO.	STATION	LOCATION (OFFSET)	TOP OF CASTING	E.I.	DEPTH	NOTES
<b>WEST DAYTON STREET SANITARY</b>						
SAS4851-031	4+25.39	CL	854.50	844.71	9.79	5'X5' RECT.
SAS4851-015	2+16.31	CL	854.30	846.67	7.63	4' DIA.
SAS4851-064	2+06.50	CL	854.39	846.71	7.68	4' DIA. DOGHOUSE
SAS4851-014	0+17.77	CL	856.10	846.88	9.22	4' DIA.

## SANITARY PIPE REMOVALS & ABANDONMENTS

REMOVE FROM	REMOVE TO	LGTH (FT)	PAID (Y/N)	REM LGTH (FT)	REM LGTH PAID (FT)	ABN LGTH (FT)	SLURRY CY	PIPE SIZE	PIPE TYPE	NOTES
<b>WEST DAYTON STREET SANITARY</b>										
SAS4851-031	SAS4851-015	209	N	209	-	-	-	18"	VCP	
SAS4851-015	SAS4851-064	10	N	10	-	-	-	18"	VCP	
SAS4851-064	SAS4851-014	189	N	189	-	-	-	18"	VCP	

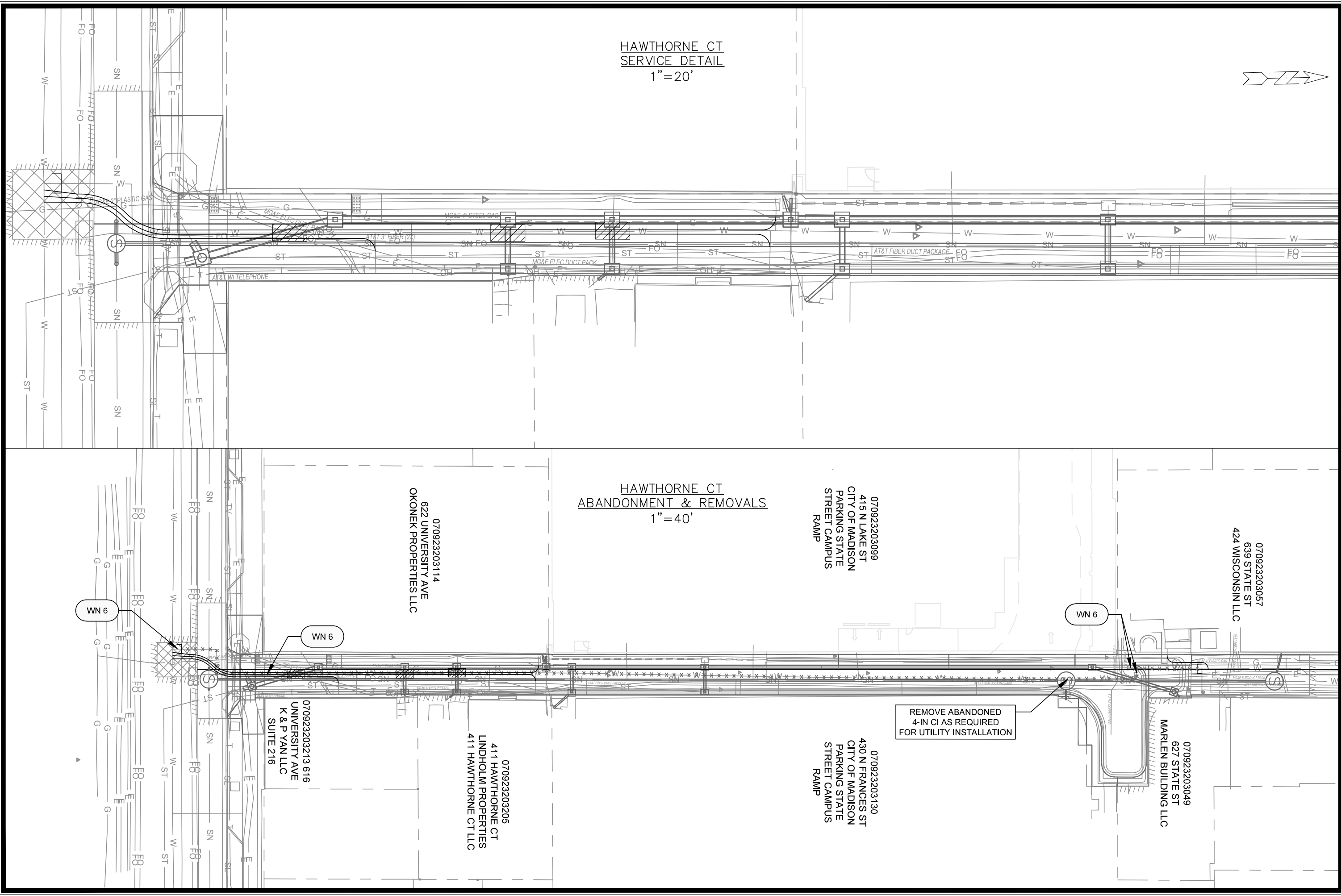
## SANITARY ULO SCHEDULE

ID NO. (OFFSET)	STATION	LOCATION (OFFSET)	TYPE
<b>WEST DAYTON STREET SANITARY</b>			
φ SANULO11-FO	0+27.94	RT-0.41	2" HDPE MCI FIBER, TOP @ 852.58' - NO CONFLICT
φ SANULO12A-STEAM	0+68.72	LT-0.95	10" DI UW-MADISON STEAM (CHILLED WATER), TOP @ 849.76' - NO CONFLICT BUT SANITARY DESIGN REVISED TO PROVIDE ADDITIONAL SEPARATION, APPROX. 6" SEPARATION, USE CAUTION
φ SANULO12B-STEAM	0+70.54	LT-0.40	10" DI UW-MADISON STEAM (CHILLED WATER), TOP @ 849.66' - NO CONFLICT BUT SANITARY DESIGN REVISED TO PROVIDE ADDITIONAL SEPARATION, APPROX. 6" SEPARATION, USE CAUTION
φ SANULO13-W	1+86.89	RT-1.01	2-4" DI WATER SERVICE, TOP @ 848.86' - NO CONFLICT BUT SANITARY DESIGN REVISED TO PROVIDE ADDITIONAL SEPARATION
φ SANULO14-G	4+01.28	RT-3.75	4-6" STEEL MG&E GAS, TOP @ 849.86' - NO CONFLICT
φ SANULO15-W	4+13.31	LT-0.09	8" DI WATER MAIN, TOP @ 848.92' - NO CONFLICT BUT USE CAUTION, LESS THAN 1' SEPARATION

## SPECIFIC NOTES

- [1] INSTALL RIGID INTERNAL CHIMNEY SEAL IN CONFORMANCE WITH S.D.D. 5.7.17
- [2] INSTALL EXTERNAL SAS WRAP IN CONFORMANCE WITH S.D.D. 5.7.2
- [3] CONNECT TO EX 24" RCP MAIN (EI(S) = 844.74)
- [4] 21" TAP (EI(N) = 844.71) FOR UPSTREAM MAIN CONNECTION
- [5] 10" TAP (EI(N) = 848.14) FOR EXISTING LATERAL CONNECTION
- [6] 24" TAP (EI(W) = 846.90) FOR UPSTREAM MAIN CONNECTION
- [7] 8" TAP (EI(S) = 848.10) FOR EXISTING LATERAL CONNECTION





HAWTHORNE CT  
SERVICE DETAIL  
1"=20'

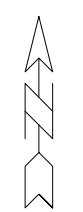
HAWTHORNE CT  
ABANDONMENT & REMOVALS  
1"=40'

MARK	REVISION	DATE	BY
14636	Designed By: TDP	Date: 10/03/2025	Scale: VARIES
14636			W-2

14636  
 WATER DETAILS & REMOVALS - HAWTHORNE CT  
 HAWTHORNE COURT RECONSTRUCTION ASSESSMENT DISTRICT - 2023  
 MADISON, WI  
 CONTRACT NO: 8733  
 M:\DESIGN\Projects\14636\CAD\Water\14636WU\Water.dwg



14636  
W-2



1" = 60'



WN20 W-1 CUT OFF 8-IN DI HAWTHORNE CT AT UNIVERSITY AVE  
 ISOLATION VALVES: V-31, V-33, AND V-80  
 NOTIFY: 411 HAWTHORNE COURT (APARTMENTS)  
 620 UNIVERSITY AVE, THE DOUBLE U BAR, THUR-SAT 7PM  
 616 UNIVERSITY AVE, ESTACION INKA RESTAURANT, 12-8 PM, 608-467-3010

WN21 W-1 CUT OFF 8-IN DI HAWTHORNE CT AT EXISTING 8X6-IN TEE  
 ISOLATION VALVES: V-77, V-80, AND SV-89  
 NOTIFY: 440 HAWTHORNE COURT, TWO BUILDINGS (APARTMENTS)

DISCLAIMER NOTE:  
 THE WATER IMPACT PLAN IS PROVIDED FOR REFERENCE PURPOSES  
 TO AID PLANNING CONNECTION POINT ISOLATION AND PREPARING  
 NOTIFICATION LISTS DURING PLANNED OUTAGES. REQUEST ANY  
 ALTERNATIVE CONNECTION METHODS IN WRITING, PER SPECS.

MARK	REVISION	DATE	BY

14636  
 WATER IMPACT PLAN - HAWTHORNE CT  
 HAWTHORNE COURT RECONSTRUCTION ASSESSMENT DISTRICT - 2023  
 MADISON, WI  
 M:\DESIGN\Projects\14636\CAD\Water\14636WU-Impact Plan.dwg  
 CONTRACT NO: 8733



14636  
 W-3

**CONSTRUCTION NOTES:**

1. CONSTRUCT NEW WATER MAIN 6.0' BELOW FINISHED GRADE, UNLESS OTHERWISE NOTED. INSULATE MAIN WITH POLYSTYRENE BOARD AT STORM CROSSINGS AND OTHER AREAS IDENTIFIED BY ENGINEER AS HAVING INADEQUATE COVER.
2. VERIFY SIZE OF EXISTING WATER SERVICES AND RECONNECT SERVICES AS INDICATED.
3. MINIMIZE DISRUPTION OF SERVICE TO CUSTOMERS. NOTIFY PER CONTRACT REQUIREMENTS OF ANY PLANNED WATER OUTAGE.

- WN-1 REPLACE THE EXISTING LEAD SERVICE WITH A NEW COPPER SERVICE.
- WN-2 EXTEND AND RECONNECT THE EXISTING COPPER SERVICE TO THE NEW WATER MAIN.
- WN-3 EXISTING SERVICE TO BE ABANDONED WHEN THE WATER MAIN IS CUT OFF.
- WN-4 DISCONNECT FROM THE OLD WATER MAIN AND RECONNECT THE EXISTING COPPER WATER SERVICE LATERAL TO THE NEW WATER MAIN.
- WN-5 RELOCATE THE EXISTING FIRE HYDRANT.
- WN-6 ABANDON WATER VALVE ACCESS STRUCTURE.
- WN-7 FURNISH AND INSTALL THE NEW TOP SECTION FOR THE WATER ACCESS STRUCTURE.
- WN-8 ABANDON THE VALVE BOX.
- WN-9 FURNISH THE DITCH, COMPACTION, AND ALL MATERIALS AND LABOR FOR THE INSTALLATION OF NEW SERVICE LATERAL.
- WN-10 REMOVE AND SALVAGE EXISTING HYDRANT
- WN-11 REPLACE THE EXISTING COPPER SERVICE WITH A COPPER SERVICE
- WN-20+ SEE WATER IMPACT PLAN FOR CONNECTION POINT ISOLATION AND WATER SHUT-OFF NOTIFICATION INFORMATION.

WATER UTILITY ULO SCHEDULE				
ULO	UTILITY	STATION	OFFSET	SHEET
WAT 1	GAS	100+11.6	4.1 LT	W-1

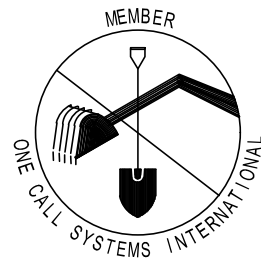
*ESTIMATE OF MATERIALS SUPPLIED BY CONTRACTOR:			
PAY_ITEM_ID	DESCRIPTION	QUANTITY	UNIT
20301	SAWCUT CONCRETE (FULL DEPTH)	60	L.F.
20321	REMOVE CONCRETE PAVEMENT	40	S.Y.
50222	UTILITY TRENCH PATCH TYPE I	40	S.Y.
50801	UTILITY LINE OPENING (ULO)	2	EACH
70056	RECONNECT 1-INCH SERVICE LATERAL, 639 STATE ST	1	EACH
70056	RECONNECT 1-INCH SERVICE LATERAL, 616 UNIVERSITY	1	EACH
70057	RECONNECT 1 1/2-INCH SERVICE LATERAL, 411 HAWTHORNE CT	1	EACH
70058	RECONNECT 2-INCH SERVICE LATERAL, 620 UNIVERSITY AVE	1	EACH
70082	CUT OFF EXISTING WATER MAIN	2	EACH
70090	ABANDON WATER VALVE BOX	2	EACH
70101	FURNISH AND INSTALL STYROFOAM	3	EACH
70104	ADJUST WATER VALVE BOX	2	EACH
70105	PIPE PLUG FOR WATER INSTALLATION	1	EACH
70110	FURNISH AND INSTALL TEMP WATER SYSTEM	1	LUMP SUM
70111	FURNISH & INSTALL ANODE	1	EACH
*ESTIMATE OF MATERIALS SUPPLIED BY WATER UTILITY:			
N/A			
*ESTIMATE OF MATERIALS SALVAGED:			
N/A			

\* ESTIMATE OF MATERIALS IS FOR INFORMATION ONLY. ENGINEER DOES NOT GUARANTEE ACCURACY OF MATERIAL TAKE-OFF.

TO OBTAIN LOCATION OF PARTICIPANTS' UNDERGROUND FACILITIES BEFORE YOU DIG IN WISCONSIN

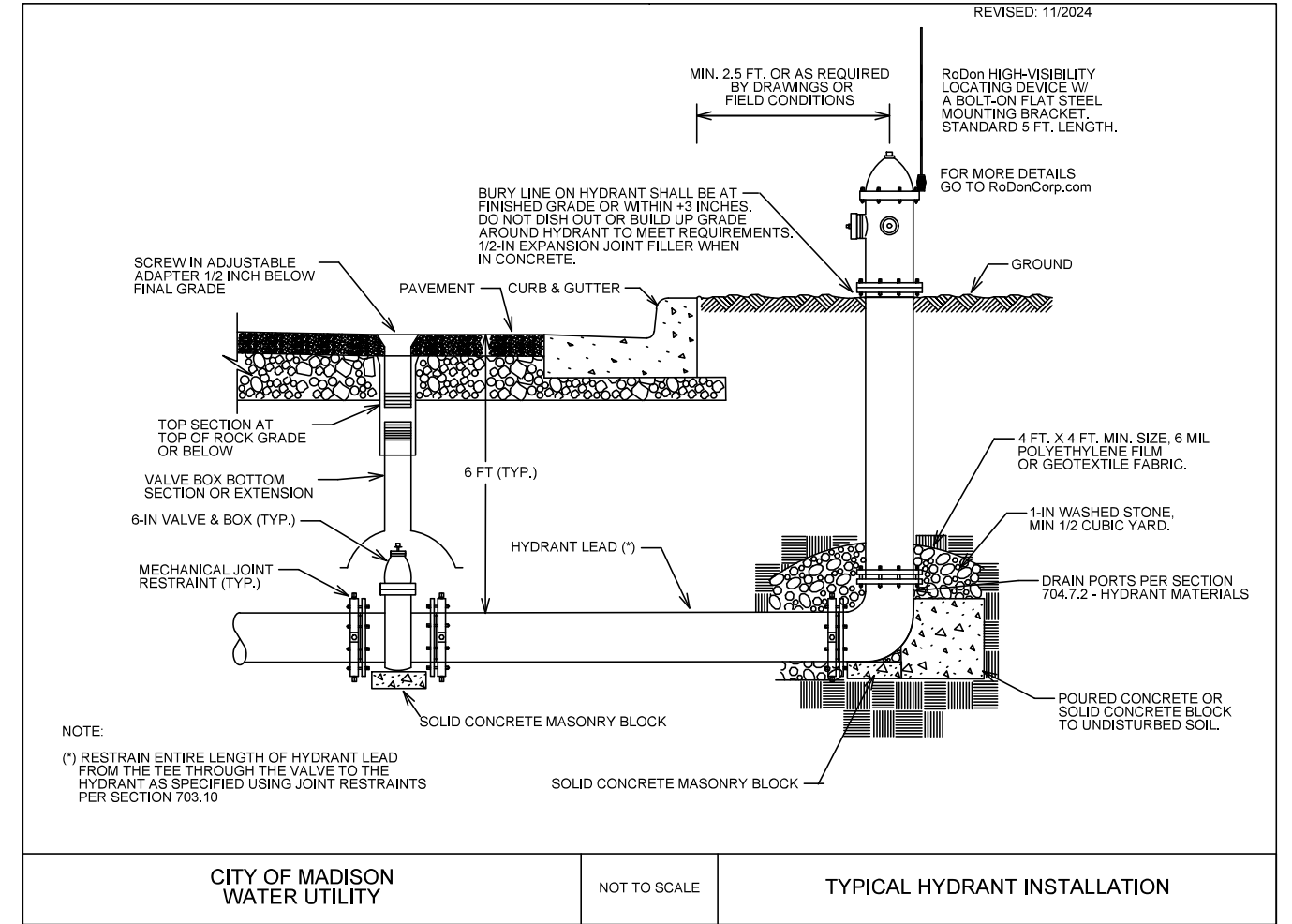
CALL DIGGERS HOTLINE TOLL FREE  
811 OR 1-800-242-8511  
FAX-A-LOCATE 1-800-338-3860  
TDD (FOR HEARING IMPAIRED) 1-800-542-2289

WIS. STATUTE 182.0175 (1974) REQUIRES MIN. OF 3 WORK DAYS NOTICE BEFORE YOU EXCAVATE.



**DISCLAIMER NOTE:** UTILITY LOCATIONS SHOWN ARE APPROXIMATE ONLY. IT SHALL BE THE CONTRACTOR'S RESPONSIBILITY TO DETERMINE THE EXACT HORIZONTAL AND VERTICAL LOCATION OF ALL EXISTING UNDERGROUND AND OVERHEAD UTILITIES PRIOR TO COMMENCING WORK.

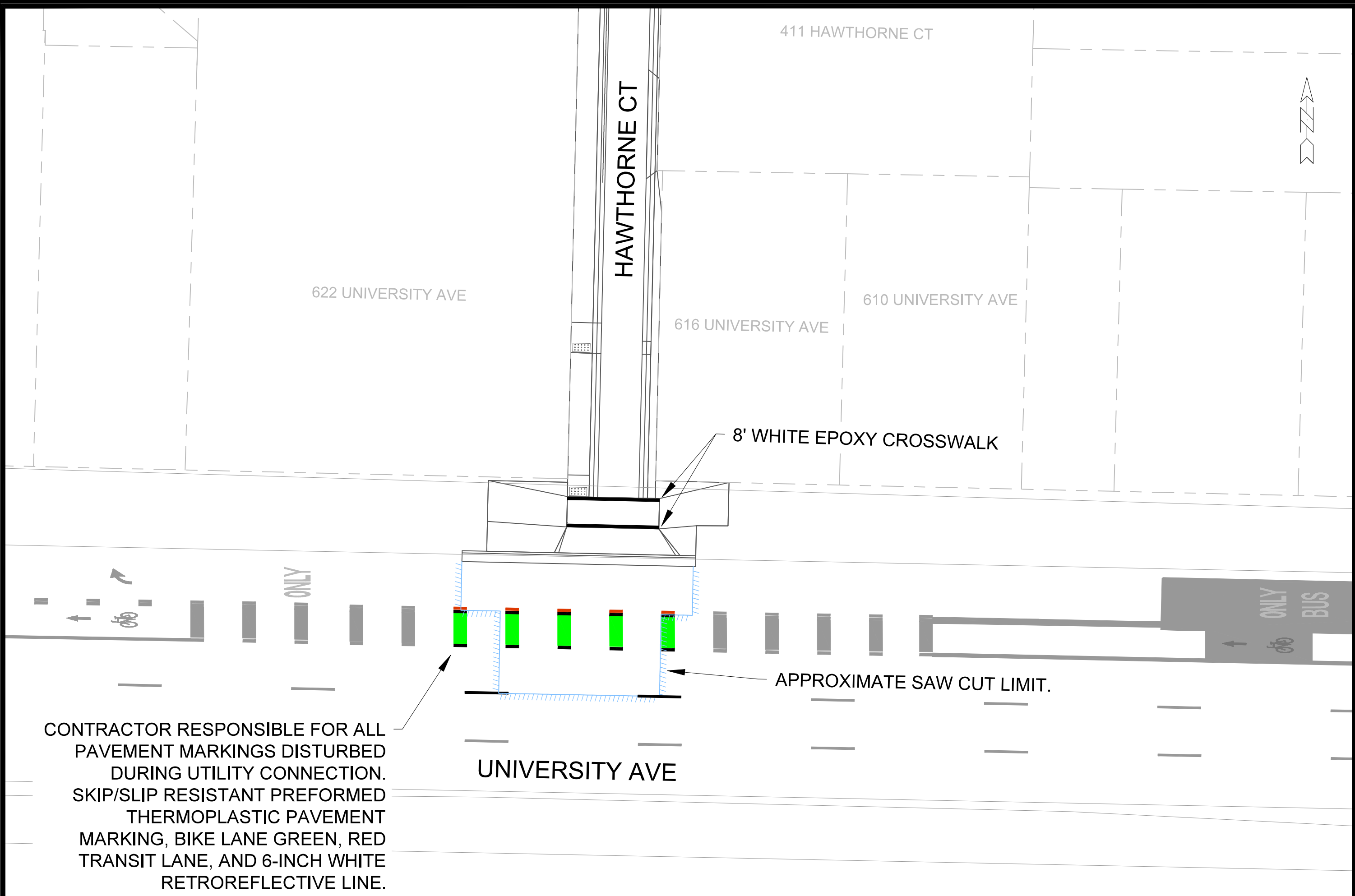
**PART VII - WATER MAINS AND SERVICE LATERALS** **DETAIL DRAWING NO. 7.04**



14636	MADISON, WI	8733	W-4
ESTIMATE OF WATER MATERIALS - HAWTHORNE CT		CONTRACT NO:	
HAWTHORNE COURT RECONSTRUCTION ASSESSMENT DISTRICT - 2023			
M:\DESIGN\Projects\14636\CAD\Water\14636WU-Materials.DWG			
14636		W-4	







CONTRACTOR RESPONSIBLE FOR ALL PAVEMENT MARKINGS DISTURBED DURING UTILITY CONNECTION. SKIP/SLIP RESISTANT PREFORMED THERMOPLASTIC PAVEMENT MARKING, BIKE LANE GREEN, RED TRANSIT LANE, AND 6-INCH WHITE RETROREFLECTIVE LINE.

8' WHITE EPOXY CROSSWALK

APPROXIMATE SAW CUT LIMIT.

UNIVERSITY AVE

HAWTHORNE CT

411 HAWTHORNE CT

622 UNIVERSITY AVE

616 UNIVERSITY AVE

610 UNIVERSITY AVE

ONLY  
BUS

MARK	REVISION	DATE	BY

14636  
 PAVEMENT MARKING PLAN - HAWTHORNE CT  
 HAWTHORNE COURT RECONSTRUCTION ASSESSMENT DISTRICT - 2023  
 MADISON, WI  
 M:\DESIGN\Projects\14636\CAD\Traffic\14636TE-PavementMarking.dwg  
 8733  
 CONTRACT NO:



14636  
 PM-1

Designed By: LMC  
 14636  
 Date: 10/30/2025 4:40 PM  
 Scale: 1:20  
 PM-1

W. JOHNSON ST

UNIVERSITY AVE

N. LAKE ST

REMOVE ALL PAVEMENT MARKINGS ON N. LAKE ST BETWEEN UNIVERSITY AVE AND W. JOHNSON ST. EXISTING CROSSWALKS TO REMAIN.



15938  
PM-2

N. LAKE ST - PAVEMENT MARKING REMOVALS  
WEST DAYTON STREET RESURFACING & NORTH LAKE STREET RESURFACING  
M:\DESIGN\Projects\14636\CAD\Traffic\14636TE-PavementMarking Removal.dwg

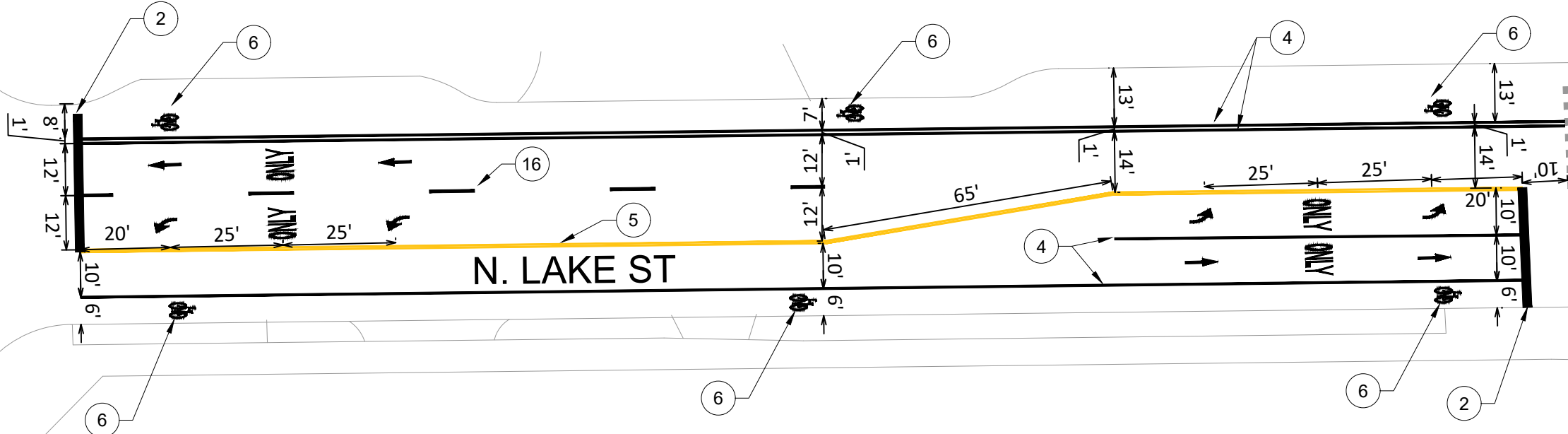
15938  
MADISON, WI  
CONTRACT NO: 8733

MARK	ADD.1	REVISION	ADD.1	DATE	12/15/25	LG	BY
15938	15938	15938	15938	15938	15938	15938	15938
Designed By: ##	15938	Date: 12/15/2025 11:08 AM	Scale: 1:30				PM-2

W. JOHNSON ST

UNIVERSITY AVE

Callout	Description
1	PAVEMENT MARKING EPOXY, CROSSWALK, 12-INCH
2	PAVEMENT MARKING EPOXY, STOP LINE, 24-INCH
3	PAVEMENT MARKING EPOXY, LINE, 8-INCH
4	PAVEMENT MARKING EPOXY, LINE, 6-INCH
5	PAVEMENT MARKING EPOXY, DOUBLE LINE, 4-INCH YELLOW
6	PAVEMENT MARKING EPOXY, SYMBOL, BIKE LANE
7	PAVEMENT MARKING EPOXY, SYMBOL, STRAIGHT ARROW
8	PAVEMENT MARKING EPOXY, WORD, ONLY
9	PAVEMENT MARKING EPOXY, SYMBOL, RIGHT ARROW
10	PAVEMENT MARKING EPOXY, SYMBOL, BIKE LANE & STRAIGHT ARROW
11	PAVEMENT MARKING EPOXY, SYMBOL, BIKE SHARROW
12	PAVEMENT MARKING EPOXY, DASHED LINE, 6-INCH (2' LINE WITH 6' GAP)
13	PAVEMENT MARKING EPOXY, DASHED LINE, 6-INCH YELLOW (10' LINE WITH 30' GAP)
14	PAVEMENT MARKING EPOXY, CROSSWALK, 6-INCH
15	PAVEMENT MARKING EPOXY, CONTINENTAL CROSSWALK, 18-INCH
16	PAVEMENT MARKING EPOXY, DASHED LINE, 6-INCH WHITE (10' LINE WITH 30' GAP)



MARK	REVISION	DATE	BY
ADD.1	ADDENDUM 1	12/15/25	LG

15938  
 8733  
 CONTRACT NO:  
 MADISON, WI  
 WEST DAYTON STREET RESURFACING & NORTH LAKE STREET RESURFACING  
 15938  
 PM-3  
 M:\DESIGN\Projects\14636\CAD\Traffic\14636TE-PavementMarking.dwg



15938  
 PM-3

UNIVERSITY AVE

ONLY BUS

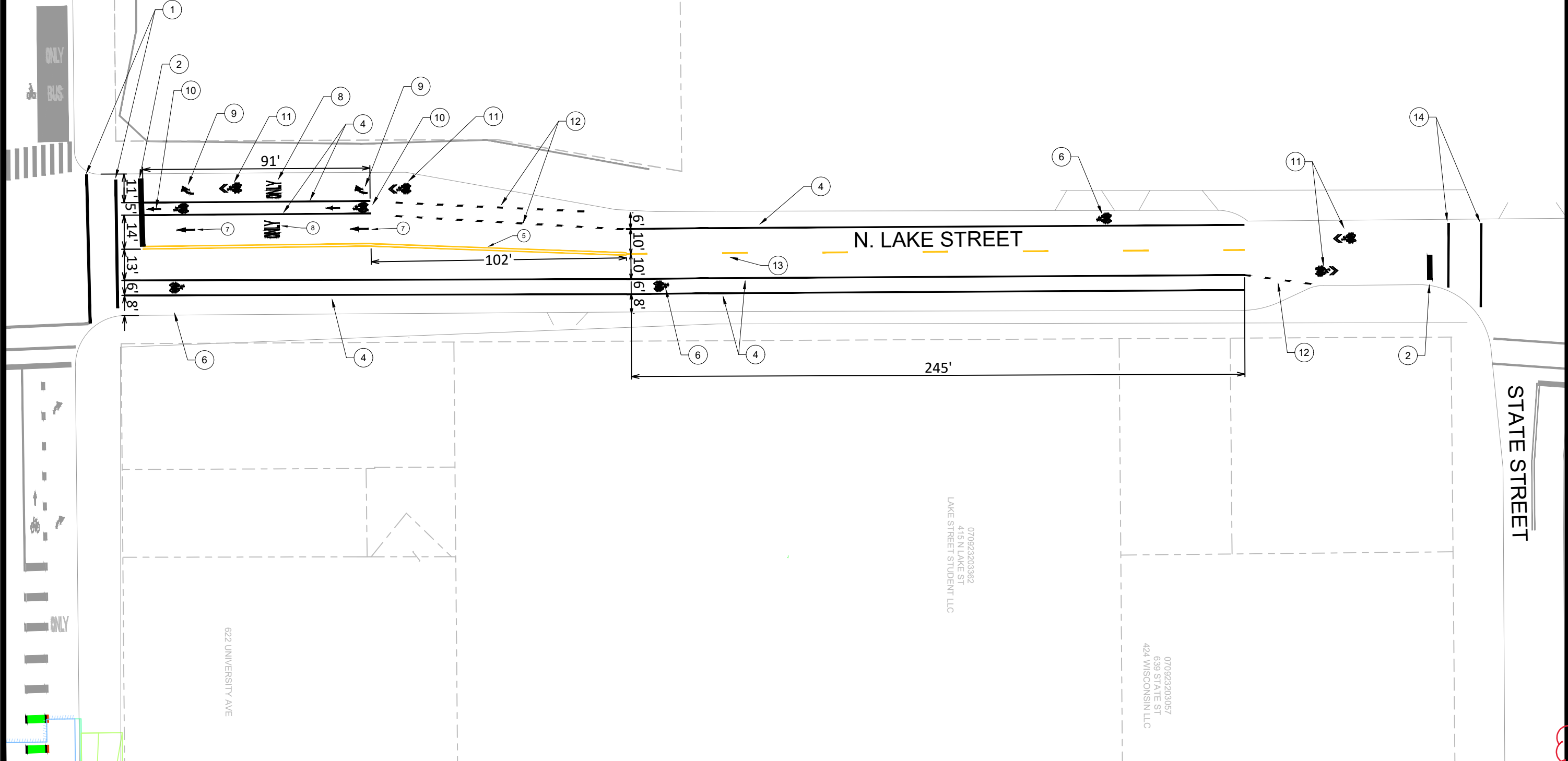
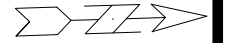
ONLY

622 UNIVERSITY AVE

LAKE STREET STUDENT LLC  
070923203362  
415 N LAKE ST

070923203057  
639 STATE ST  
424 WISCONSIN LLC

Callout	Description
1	PAVEMENT MARKING EPOXY, CROSSWALK, 12-INCH
2	PAVEMENT MARKING EPOXY, STOP LINE, 24-INCH
3	PAVEMENT MARKING EPOXY, LINE, 8-INCH
4	PAVEMENT MARKING EPOXY, LINE, 6-INCH
5	PAVEMENT MARKING EPOXY, DOUBLE LINE, 4-INCH YELLOW
6	PAVEMENT MARKING EPOXY, SYMBOL, BIKE LANE
7	PAVEMENT MARKING EPOXY, SYMBOL, STRAIGHT ARROW
8	PAVEMENT MARKING EPOXY, WORD, ONLY
9	PAVEMENT MARKING EPOXY, SYMBOL, RIGHT ARROW
10	PAVEMENT MARKING EPOXY, SYMBOL, BIKE LANE & STRAIGHT ARROW
11	PAVEMENT MARKING EPOXY, SYMBOL, BIKE SHARROW
12	PAVEMENT MARKING EPOXY, DASHED LINE, 6-INCH (2' LINE WITH 6' GAP)
13	PAVEMENT MARKING EPOXY, DASHED LINE, 6-INCH YELLOW (10' LINE WITH 30' GAP)
14	PAVEMENT MARKING EPOXY, CROSSWALK, 6-INCH
15	PAVEMENT MARKING EPOXY, CONTINENTAL CROSSWALK, 18-INCH



ADD. 1	REVISION	DATE	BY
ADD. 1	ADDENDUM 1	12/15/25	LC
MARK	REVISION	12/15/2025 10:53 AM	Scale: 1" = 40'
Designed By: ##	15938		PM-4

15938  
MADISON, WI  
CONTRACT NO: 8733  
PAVEMENT MARKING PLAN - N. LAKE ST  
WEST DAYTON STREET RESURFACING & NORTH LAKE STREET RESURFACING  
M:\DESIGN\Projects\14636\CAD\Traffic\14636TE-PavementMarking.dwg



15938  
PM-4

N. LAKE STREET

N. FRANCES ST

E. DAYTON ST

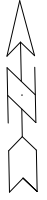
18-INCH CONTINENTAL CROSSWALK EPOXY

4-INCH DOUBLE YELLOW EPOXY

6-INCH EPOXY LINE

APPROXIMATE SAW CUT LIMITS.  
CONTRACTOR RESPONSIBLE FOR ALL  
DISTURBED MARKINGS DUE TO SANITARY  
REPLACEMENT WORK

EPOXY BIKE SYMBOL



PAVEMENT MARKING PLAN - E. DAYTON ST

15938

WEST DAYTON STREET RESURFACING & NORTH LAKE STREET RESURFACING

MADISON, WI

M:\DESIGN\Projects\14636\CAD\Traffic\14636TE-PavementMarking.dwg

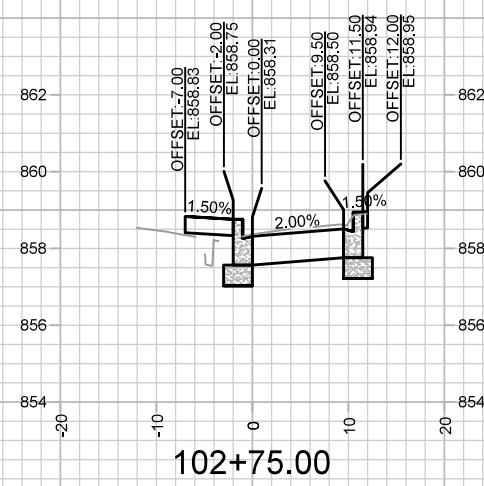
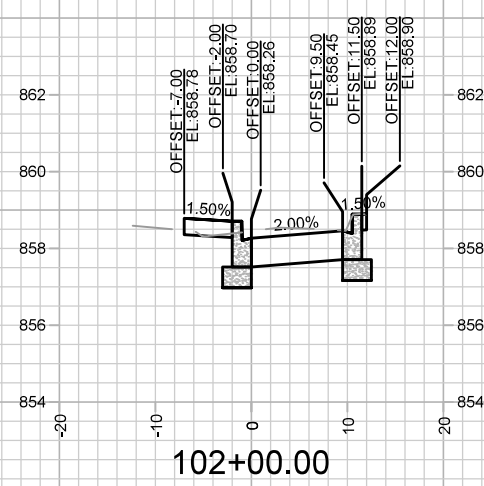
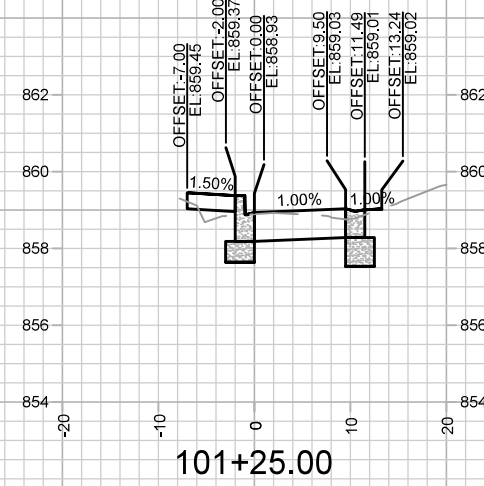
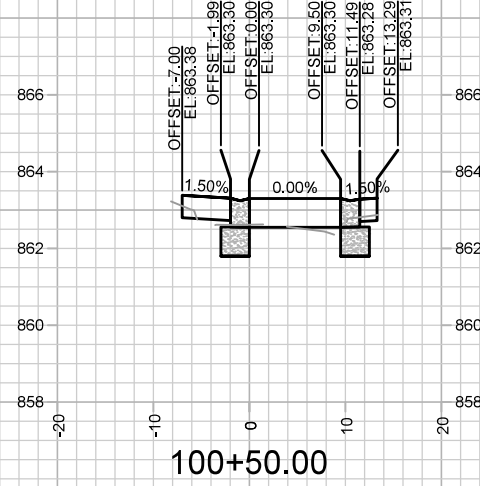
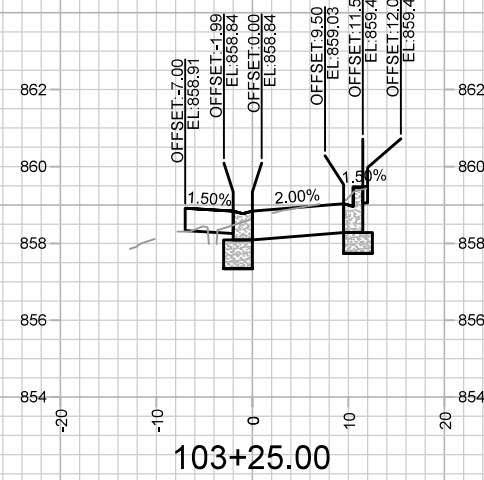
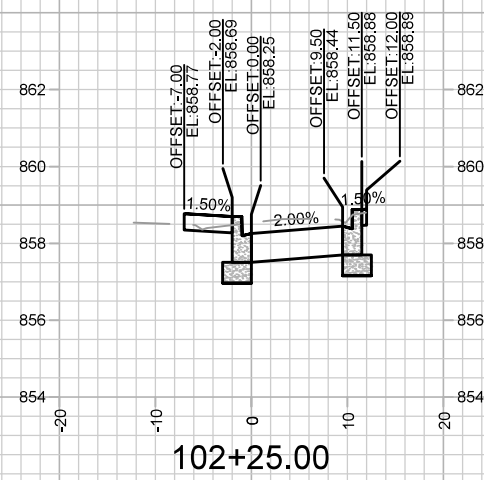
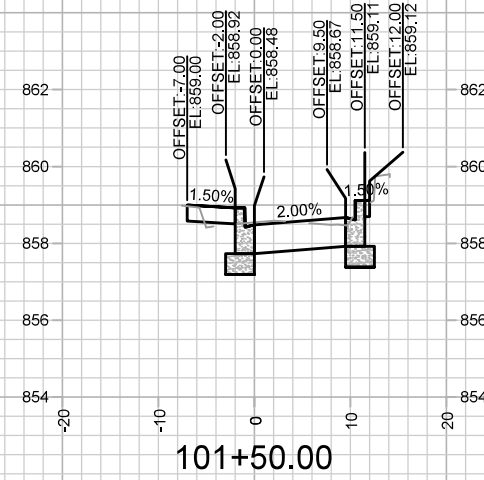
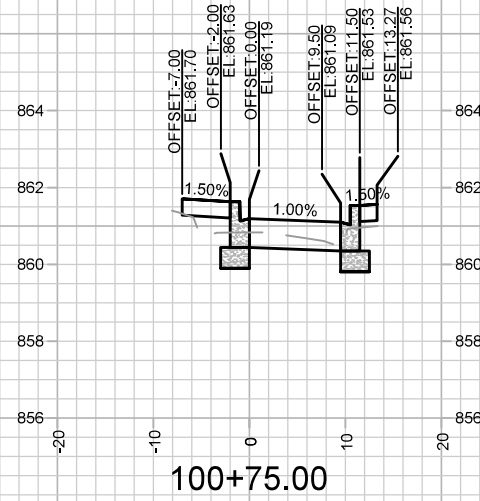
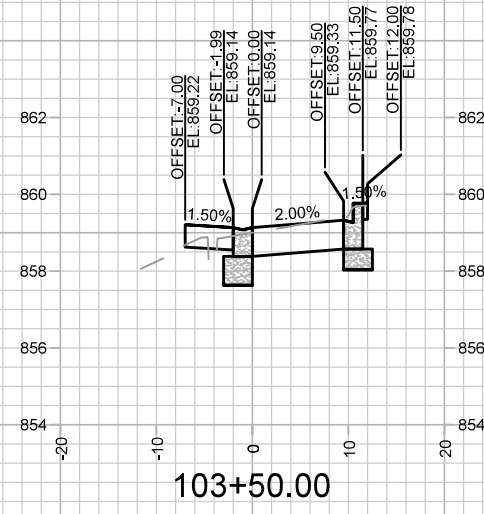
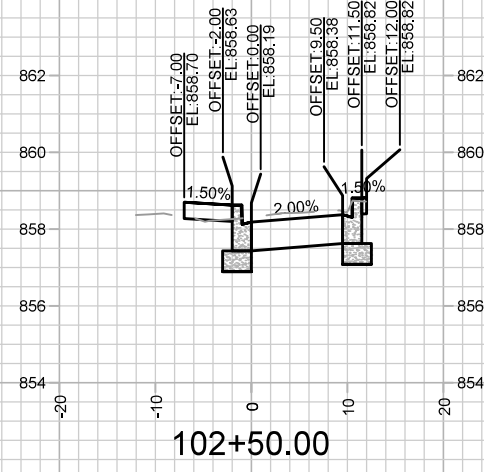
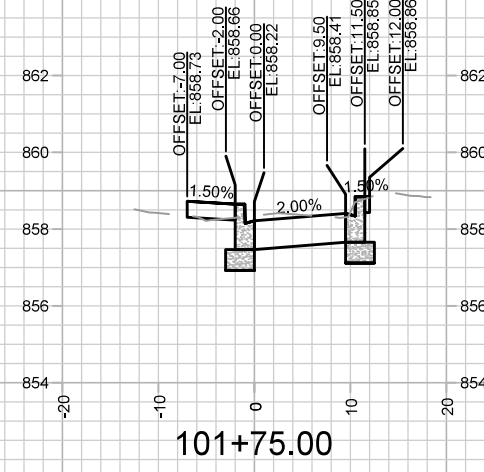
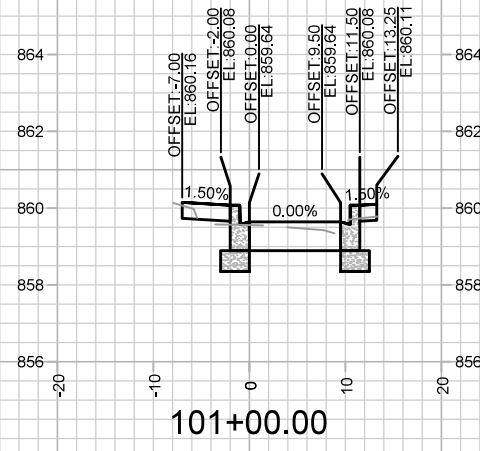
CONTRACT NO: 8733

MARK	ADD. 1	REVISION	ADDENDUM 1	DATE	12/15/25	LC	BY
Designed By: ##	15938	Date: 12/15/2025 10:54 AM	Scale: 1" = 40'				PM-5



15938

PM-5



MARK	REVISION	DATE	BY

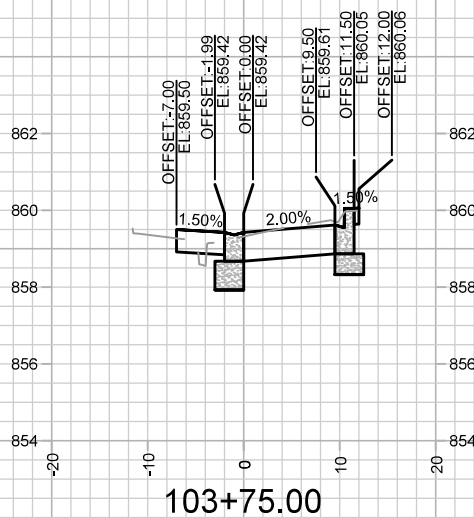
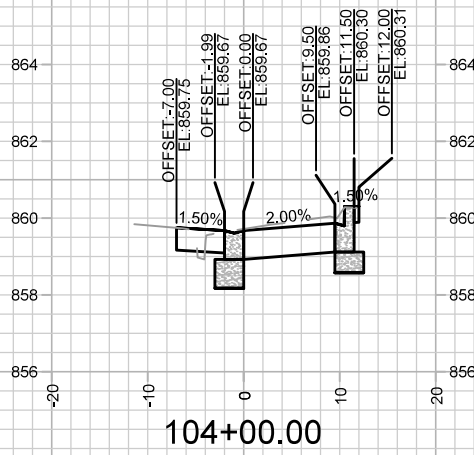
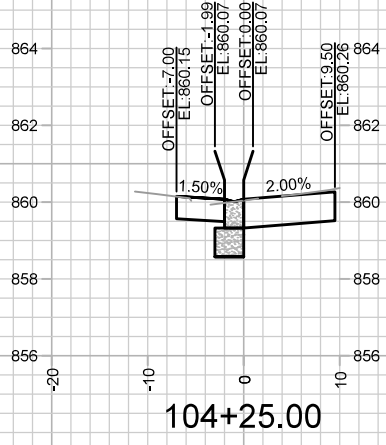
14636  
 8733  
 CONTRACT NO:

CROSS SECTIONS - HAWTHORNE CT  
 HAWTHORNE COURT RECONSTRUCTION ASSESSMENT DISTRICT - 2023 MADISON, WI  
 M:\DESIGN\Projects\14636\CAD\Streets\14636EN-X\Sheets.dwg



14636  
 X-1

Scale: 1" = 20'

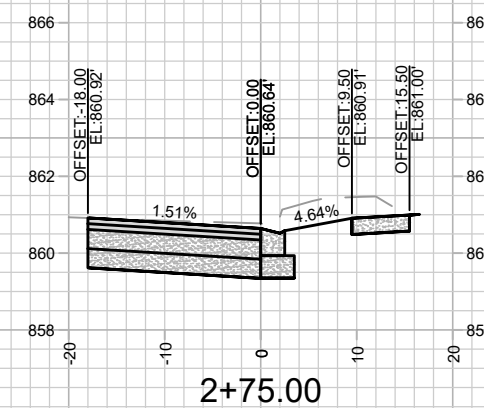
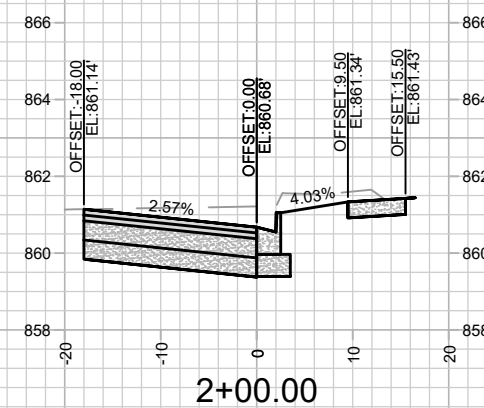
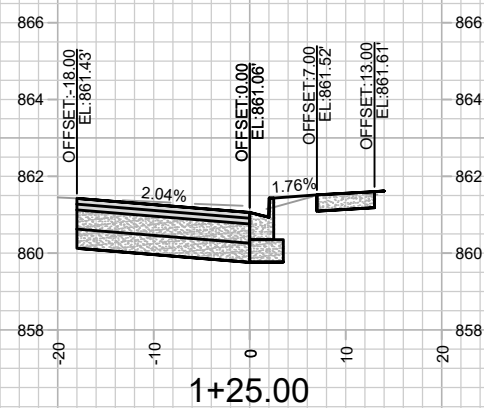
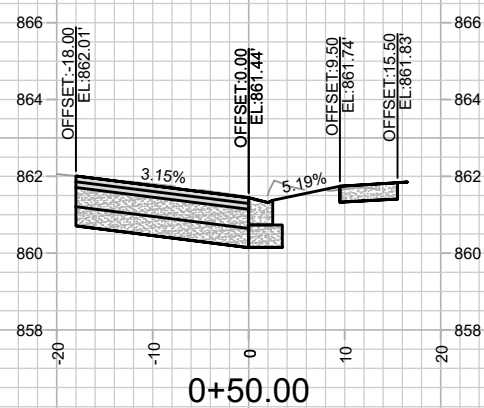
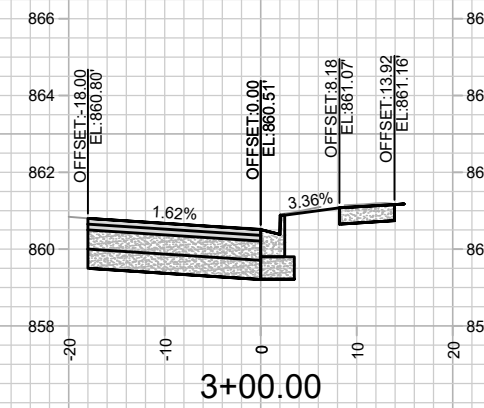
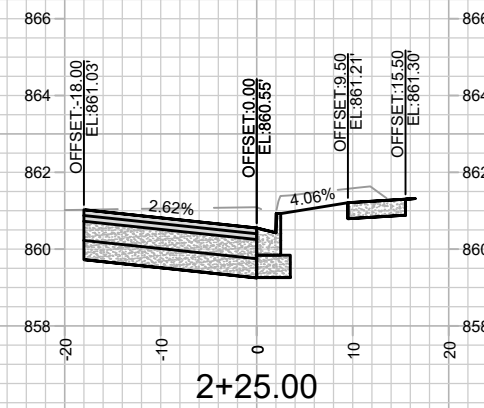
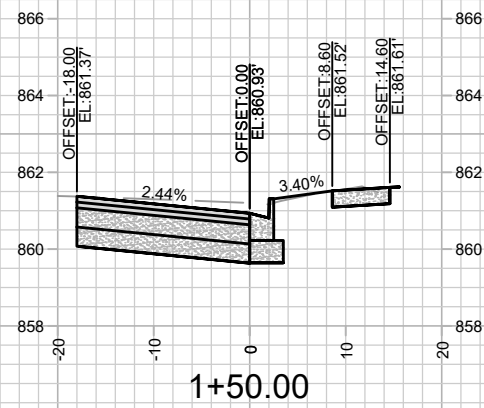
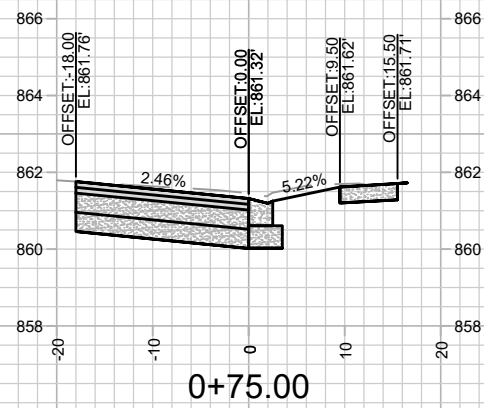
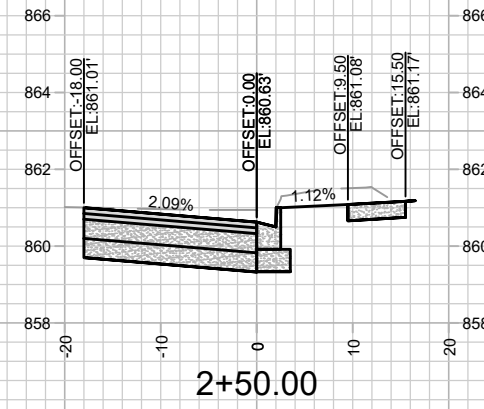
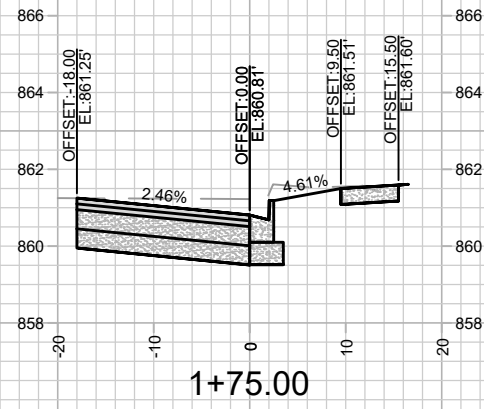
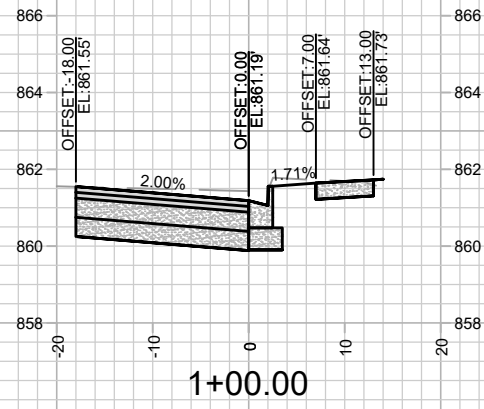


MARK	REVISION	DATE	BY
14636	8/28/2023 9:42 AM		
Designed By: EEA			Scale: 1" = 20'
14636			X-2

14636  
 CROSS SECTIONS - HAWTHORNE CT  
 HAWTHORNE COURT RECONSTRUCTION ASSESSMENT DISTRICT - 2023 MADISON, WI  
 M:\DESIGN\Projects\14636\CAD\Streets\14636EN-X\Sheets.dwg  
 CONTRACT NO: 8733



14636  
 X-2



NOTES  
 - SEE SHEET D-1 FOR DETAILS  
 - CURB & GUTTER, TERRACE, AND SIDEWALK WORK ON N. LAKE ST TO BE COMPLETED BY OTHERS AND IS SHOWN FOR INFORMATION ONLY.

ADD. 1	ADDENDUM 1	DATE	BY
MARK	REVISION	DATE	BY
DESIGNED BY	GCIT	DATE	SCALE
15938		12/12/2025 11:25 AM	1" = 20'
			X-3

15938  
 WEST DAYTON STREET RESURFACING & NORTH LAKE STREET RESURFACING  
 MADISON, WI  
 CONTRACT NO.: 8733



15938  
 X-3